



Jefferson's Research Conduct and Compliance Program

Presented by: Theodore F. Taraschi, PhD

Associate Provost for Research Conduct & Compliance

April 17, 2018

Thomas Jefferson University Research Compliance Program

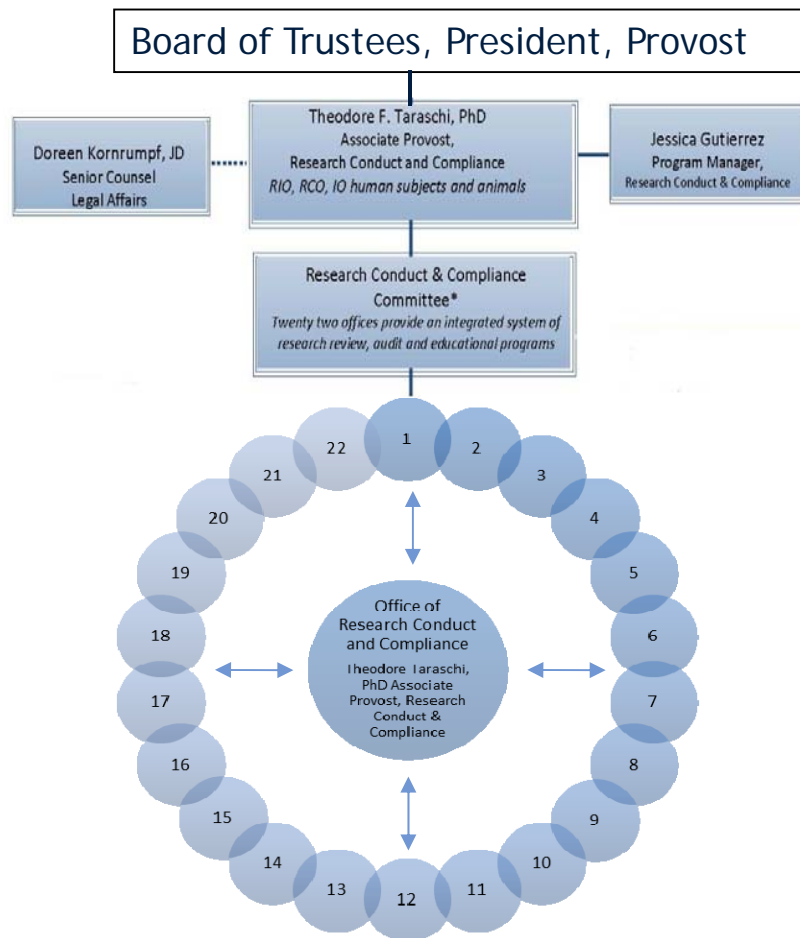
I. OVERVIEW

Jefferson's Research Compliance Program demonstrates Jefferson's commitment to ethical conduct and compliance in research by setting forth guidelines for conduct designed to prevent and detect violations of law related to research, uphold accreditation standards, comply with Jefferson policies, and encourage research compliance by providing support, training, and educational resources. **The Research Compliance Program is designed to assist Jefferson in fulfilling its compliance responsibilities by creating an operational structure that outlines and documents Jefferson's research compliance efforts and is designed to work in conjunction with other Jefferson compliance plans.** Jefferson's research compliance activities rely on the combined efforts of researchers, support staff, and others, as well as collaboration among its departments and offices. Jefferson has designed its Enterprise Research Compliance Program to be proactive, transparent, and integrated to prevent problems before they happen without impairing research. Jefferson's Research Compliance Program complements, but does not replace or supercede any other policy applicable at Jefferson.

(Reviewed and revised January 2018)

Office of Research Conduct & Compliance

MISSION: Oversee and facilitate regulation-compliant research through integrated system of review, audit and educational programs



Stakeholders include:

- Biosafety Officer
- Environmental Health Officer
- Institutional Animal Care and Use Committee, Chair
- Institutional Animal Care and Use Committee, Regulatory Affairs Manager
- Office of Animal Resources, Director
- Senior Contract Specialist Innovation Management
- Research Administration Center of Excellence, Director
- Research Conduct and Compliance Liaison, Abington Campus
- Research Conduct and Compliance Liaison, Aria Campus
- Research Conduct and Compliance Liaison, East Falls Campus
- Research Conduct and Compliance Liaison, New Jersey Campus
- Institutional Biosafety Committee
- Conflict of Interest Committee
- Office of Corporate Compliance and Privacy, Senior Vice President and Chief Compliance Officer
- Office of Research Administration, Director
- Sponsored Programs and Accounting Office, Associate Controller
- Human Resources, Vice President
- Export Control and Health Exchange, Associate Director
- Jefferson Clinical Research Institute
- Office of Human Research, Institutional Review Board
- Office of Research Conduct and Compliance

RESEARCH

Research Resources

[Research Support Services](#)

Research Conduct & Compliance

[Compliance Areas](#)[Policies & Guidelines](#)[Responsible Conduct of
Research](#)[Announcements](#)[Funding Opportunities](#)[Collaborate](#)[Other Research Resources](#)

Jefferson Researchers

[Jefferson Clinical
Research Institute](#)

Research Seminars

RELATED LINKS

[Sidney Kimmel Cancer
Center Research](#)

Research Conduct & Compliance



The **Office of Research Conduct and Compliance (ORCC)** is overseen by Theodore F. Taraschi, PhD, Associate Provost for Research Conduct and Compliance (APRCC), Research Integrity Officer (RIO). This office facilitates the conduct of ethical and regulation-compliant (human and animal subject) research through an integrated system of research review, audit and educational programs in accordance with [Thomas Jefferson University's Research Compliance Program](#).

Office of Research Conduct & Compliance Office
1020 Locust Street, M-41F
Philadelphia, PA 19107
(215) 955 -3900

[ORGANIZATIONAL
CHART \(PDF\)](#)

Compliance Areas

A list of entities at Thomas Jefferson University that are responsible for issues related to research administration, management, and compliance.

Policies & Guidelines

A consolidated list of key research policies, procedures, and other guidance.

Responsible Conduct of Research

A consolidated source for information and resources to help Jefferson research faculty navigate and fulfill these important responsibilities.

Announcements

Find out what is happening around campus concerning compliance.

Faculty, Staff, Students and All Visiting Researchers at Jefferson

Anyone at Jefferson who conducts research, publishes work or creates intellectual property must comply with our research policies and guidelines.

Recent Federal Mandate for Grant Recipients

Development of Campus-wide Responsible Conduct of Research Program (RCR)

- RCR Elements - Authorship, Collaborative Research, Conflicts of Interest, Data Management, Mentoring, Peer Review, Research Involving Human Subjects, Research Misconduct, Using Animal Subjects in Research.
- Currently establishing new policies/guidelines for required training of faculty, staff, and trainees. The Provost is for the first time requiring mandatory completion of nine Collaborative Institutional Training Initiative (CITI) training modules in the RCR by all in the research community every four years.

Recent Federal Mandate for Grant Recipients

Development of Campus-wide Scientific Rigor and Reproducibility Guidelines

- Offering electronic research notebooks (**LabArchives**) to address data management and other RCR requirements. Used by Brown, Columbia, Cornell, Yale, Penn, Cal Tech, Cincinnati, Michigan, MIT, Ohio State, Pitt, University of Utah, Wisconsin and others.
- It has been estimated that 25-40% of pre-clinical research is not reproducible, at a cost of \$20,000,000,000 - \$30,000,000,000 annually. Due to a number of factors including insufficient detail or documentation in research data records.
- Collaborative project that requires partnership between IS&T, Library Services, the ORCC and LabArchives. Installed on CC and EF campuses. Currently in beta testing phase. Anticipated July 1 campus-wide launch.

What is LabArchives and What Does it Do?

A secure, cloud-based collaborative platform for laboratory researchers, lab instructors, and students to organize, document, store, protect, share, collaborate, and publish their research and data.

Institution Administration	Faculty and Researchers	Classroom Instructors	Classroom Users
Ensure Compliance	Standardize Workflows	Standardize Workflows	Lowers Student Costs
Secure / Control Data	Describe research	24/7 Access to student work.	Digital Native product
Prove Discovery	Store / Control data	Identify at-risk students	Instant collaboration
Protect Intellectual Property	Support research team	Manage Course Assets	Comment with Instructor /TA
Utilizes existing authentication	Support Data Management Plan	Distribute Course Access	Faster Grading & Review
Usage Reporting / Management Dashboard	Collaborate intra/extra institution	Collect Assignments	Teaches tool used in industry
Real time back-up	Manage lab remotely	Increase Student Engagement	Enforces Scientific Method
Entry Time Stamp	Automates Data Capture	Comment real-time	Real time back-up
Unlimited Storage/Accounts	Real time back-up	Instructor & TA rights	Improved Communication
Institutional Control	Unlimited Storage	Assign Grades	Reduce Logistical Burden
Controlled Access	Controlled Team Access	Integrated with LMS	Allows for Content Publishing
Non-deletable	Real-Time Team Engagement (alerting feature)	Integrated with instruments	Improve Academic Standards
Cost Savings	Complete Record of Research	Real time back-up	Align with STEM Objectives
	Cost savings		Low Carbon Footprint

Jefferson Aspires to be a Leader in Training Best Research Data Management Practices

- Jefferson seeks to become a destination for providing creative and innovative activities to complement and enhance the training of a diverse workforce to meet the nation's biomedical, behavioral and clinical research needs.
- Jefferson will develop creative educational activities with a primary focus on developing courses for skills development, training modules for graduate students, postdoctoral fellows and beginning investigators to enhance data reproducibility.
- Planned submission of R25 grant to NIH by January 2019 (final opportunity). Budget is uncapped.
- APRCC will be the PI. Co-investigators from CC and EF campuses anticipated.

To Learn More About The Office of Research Conduct and Compliance

Visit our website:

[http://www.jefferson.edu/university/research
/resources/conduct_compliance.html](http://www.jefferson.edu/university/research/resources/conduct_compliance.html)