

this week PhilaU

Your weekly source for news, weather, sports, events and more!
Monday, November 14 to Sunday, November 20, 2005

 3:00 pm
Currently: 68 | RealFeel® High: 64
Humidity: 63
Winds: S at 23 mph

[Click here for a 15-day forecast!](#)

[XML RSS](#)

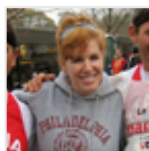
NEWS BRIEFS

- Representatives from the University community promoted Philadelphia University's Graduate and Continuing Studies programs at the NBC10 Consumer Expo >>
- Faculty, staff and students turned out to save lives at the University's annual, fall blood drive >>
- Paul Grushkin, rock & roll author and historian, presented his comprehensive concert poster collection >>

IN THE NEWS

- Frank Congdon, executive director of Continuing and Professional Studies, was interviewed by hosts Bill Henley and Lauren Hart on the Nov. 8 edition of the *10! Show*. The show, which airs on NBC 10, also promoted the NBC 10 Consumer Expo at the Fort Washington Expo Center, held Nov. 12 through 13, where Philadelphia University staff and students promoted educational programs for adult learners.

WEAR IN THE WORLD

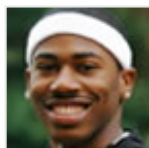


Liz Claman, co-anchor of CNBC's *Morning Call*, shows her Philadelphia University pride >>

HATS OFF

- Senior Fashion Design student Jovan O'Connor's red evening gown design was worn by singer Patti LaBelle on UPN57's *Live at Atlantis* concert Nov. 8 >>
- Jessica Gardner, a sophomore Fashion Design student in Associate Professor of Foreign Languages Eileen Angelini's Professional French I class, won first place at the American Association of Teachers of French (AATF)'s 2006 National French Week Essay Regional Competition. Gardner's winning essay discussed Francophone Heritage in the United States.

PLAYER OF THE WEEK



Tayron Thomas
Men's Basketball >>

TODAY CLICK HERE FOR WEEK'S EVENTS >>

DATE: << auto-generated >>

TIME: << auto-generated >>

CONTACT: << auto-generated >>

You are encouraged to submit event listings by using an online form; to access this form, [click here >>](#)

PHOTO OF THE WEEK



The construction of Philadelphia University's new athletic and recreation facility is moving forward >>

WORD OF THE WEEK

- Soul (n.) The spirit or immaterial part of man, the seat of human personality, intellect, will and emotions; regarded as an entity that survives the body after death. >>



[Construction Update >>](#)



[2005/ 2006 Parking Program >>](#)



[This Week's Dining Services Menus >>](#)



[Ram Report \(Athletics\) >>](#)



[Gateway Update: Latest News from Gutman Library >>](#)

[Click here to visit the This Week @PhilaU past issue archive](#)



Philadelphia University

School House Lane & Henry Avenue
Philadelphia, PA 19144-5497
Tel: 215.951.2700

Comments? E-mail webmaster@PhilaU.edu
To contact admissions, e-mail admissions@PhilaU.edu.
Need directions? [Click here.](#)
To find a person, department, or school, [click here.](#)