

# this week **PhilaU**

Your weekly source for news, weather, sports, events and more!  
Monday, January 2 to Sunday, January 8, 2005



3:30 pm  
Currently:  
39

RealFeel® High: 24  
Humidity: 85  
Winds: NE at 16 mph

[Click here for a 15-day forecast!](#)

## HEADLINES



Beginning January 2006, Philadelphia University's Continuing and Professional Studies Program will open its new Bucks County location >>

## NEWS BRIEFS

- The School of Business Administration held its annual Tax Seminar >>
- To honor Associate Professor Marylyn "Peggy" Goutmann, who received the Bertrand W. Hayward Alumni Award at this year's Homecoming Weekend >>
- More than just a midnight snack, students enjoyed a full meal of eggs, pancakes and more at Dining Services' second annual Midnight Breakfast >>

## IN THE NEWS

- Vice President for Academic Affairs Jeff Sense recently had a Letter to the Editor published in the *Chronicle of Higher Education* >>

## HATS OFF

- Visiting Assistant Professor of History R. Scott Hanson recently signed a contract with Kartemquin Films to begin work on his documentary film, *The One and the Many*, about religious freedom, immigration and pluralism in Flushing, New York. Prof. Hanson also recently received a development grant for the project from the **Hartley Foundation**.



Construction Update >>



Ram Report (Athletics) >>



2005/ 2006 Parking Program >>



Gateway Update: Latest News from Gutman Library >>



This Week's Dining Services Menus >>

**TODAY** [CLICK HERE FOR WEEK'S EVENTS >>](#)

No events scheduled for today.  
Please [click here](#) for the week's events.

*You are encouraged to submit event listings by using an online form; to access this form, [click here](#) >>*

## A SEMESTER IN PHOTOS

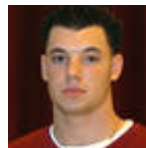


Take a look back at the 2005 Fall Semester in photos >>

## A NOTE FROM MAIL SERVICES

- Mail Services will be working on a half-day schedule over the holiday break >>

## PLAYER OF THE WEEK



Christian Burns  
Men's Basketball >>

[Click here to visit the This Week @PhilaU past issue archive](#)



**Philadelphia University**  
School House Lane & Henry Avenue  
Philadelphia, PA 19144-5497  
Tel: 215.951.2700

Comments? E-mail [webmaster@PhilaU.edu](mailto:webmaster@PhilaU.edu)  
To contact admissions, e-mail [admissions@PhilaU.edu](mailto:admissions@PhilaU.edu).  
Need directions? [Click here](#).  
To find a person, department, or school, [click here](#).