

# This Week @ PhilaU

A Weekly Newsletter for Faculty, Staff and Students

## NEWS BRIEFS

### University Celebrates Marianne Able Scholarship Day

The eighth annual Marianne Able Scholarship Day and Silent Auction, featured over 40 items including fun gift baskets, Philadelphia Eagles tickets, dinner and hotel packages, and designer jewelry. The first ever "Designer's Showcase" highlighted the work of talented Philadelphia University students Kelly Murray, Stacia Hoskins, Alicia Bentancourt, Nisha Shah, Shallyn, and Blaire Phillips and faculty members Josh Owen, Wendelyn Wood Anderson and Anne Smock.

Over \$3,800 was raised for the endowed scholarship fund, which is currently approaching \$100,000, providing financial assistance to two deserving students each year. To date, seven Philadelphia University students have received the scholarship, including 2004 recipients Ty Shappell, a senior Architecture major, and Christine Jenkins, a senior Psychology major.



Pictured above: John Pierantozzi, vice president for Development and Alumni Relations (far right) receives a check from Liz Copple '84, her son Colton and her father Jim Able, after this year's successful event. 2004 Marianne Able Scholarship recipient Ty Shappell '05 is pictured left.

## A Foreign Affair

The Foreign Language Department sponsored the annual International Games Festival on December 1, featuring games and creative activities from around the globe. Foreign language instructors Eileen Angelini, Maria Peale, Siefried Boettjer and Eiko Shimada introduced participants to games from France, Spain, Germany and Japan.

## CAMPUS PLAN UPDATE

Check this column each week for the latest news on Philadelphia University's Campus Plan. Check our progress and any relocation plans as we get ready for the new construction. We're on the move!

## EVENTS

### Monday, December 6

#### Yoga

5:30 to 6:30 p.m.  
Downs Hall Room 3  
Please bring a mat. Cost is \$10 per class.  
**Contact:** Lois Janney, x2727

#### De-Stress for Success: Meditation Session

7 p.m.  
Student Center Lounge  
Quiet your mind. Calm your emotions. Relax your body. Find your center. Join us for an introductory meditation session. Sponsored by the Spiritual Development Office.  
**Contact:** Lawrie Hurtt, x2856

#### Free Open Swimming

All faculty, staff and students are welcomed.  
7:30 to 9:30 p.m., Monday and Wednesday evenings  
Penn Charter High School  
A lifeguard will be on duty.  
**Contact:** Brad Koch, x2723

### Tuesday, December 7

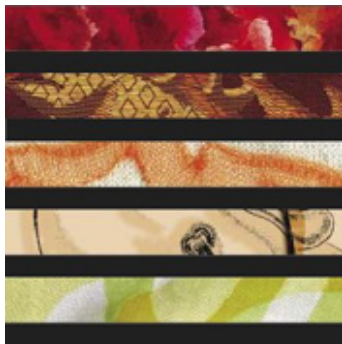
#### Cornerstone Weekly Meeting

9 to 10:30 p.m.  
Student Center Lounge  
**Contact:** Ellen Nave, 215.843.3102

### Wednesday, December 8



*Pictured above: Students and other members of the University community enjoyed some friendly international competition playing the French lawn game Petanque (left) and tested their hand eye coordination with Japanese activities Kendama (right-background) and the paper-folding art of Origami (front-foreground).*



## 2004 Textile Design Exhibition Opening Reception

**Friday, December 10**

**4 to 7 p.m.**

The Design Center  
at Philadelphia University

### Pretzel Sale

Sponsored by Delta Phi Epsilon  
8 a.m. to 2 p.m.  
Hayward Hall lobby  
Contact: Sarah Nash, NASH2@PhilaU.edu

### Making Christmas Cards for Children's Hospital of Philadelphia

11 a.m. to 3 p.m.  
Student Center Lounge  
Contact: Vince Lattanzio, x0198

### Hanukkah Candle Lighting Ceremony

4 p.m.  
Hayward Hall, lobby  
Contact: David Brookstein, x2751

### Free Open Swim

All faculty, staff and students are welcomed.  
7:30 to 9:30 p.m. every Monday and Wednesday evening at Penn Charter High School. A lifeguard will be on duty.  
Contact: Brad Koch, x2723

## Thursday, December 9

### Making Christmas Cards for Children's Hospital of Philadelphia

11 a.m. to 3 p.m.  
Student Center Lounge  
Contact: Vince Lattanzio, x0198

### Amnesty International Meeting

Noon  
Ravenhill Mansion Room 13  
A weekly meeting to discuss upcoming events and write letters.  
Contact: Jesica Simpson, SIMPSON3@philau.edu

### Math Review Sessions

Sponsored by the Learning and Advising Center  
11 a.m. to 1 p.m.  
Downs Hall, first floor classroom  
Contact: Melanie Boston, x6834

## Friday, December 10

### 2004 Textile Design Exhibition Opening Reception

4 to 7 p.m.  
The Design Center  
Contact: Textile Design Dept., x2750

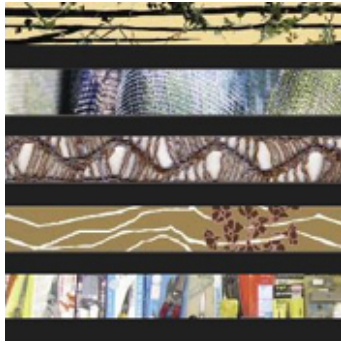
### Friday Prayers (Jumah)

Sponsored by Minaret, Philadelphia University's Muslim Student Association  
1 to 2 p.m.  
Student Center Lounge  
Open to entire university community.  
Contact: Bilal Abdul-Hakim, x0425 or Murad Oomer, 215.869.3057 or minaret786@hotmail.com

## Saturday, December 11

## Sunday, December 12

This year's show runs through December 21. Call 215.951.2750 or visit [www.PhilaU.edu/textiledesign](http://www.PhilaU.edu/textiledesign) for more information.



## Former Fashion Design Student New Reality Show Contestant



Jay McCarroll, a former Fashion Design student at Philadelphia University, is one of the contestants on Bravo's new fashion design reality series, *Project Runway* with Supermodel Heidi Klum. McCarroll, whose hometown is Lehman, Pa., survived the show's first designer challenge last week, and will return for this week's show.

The program, which airs each Wednesday at 10 p.m., gives aspiring young designers the opportunity to break into the fashion design world. Each week, one contestant will be eliminated after participating in various design challenges, and the ultimate winner will receive \$100,000 to help them launch their own design line.

See more about Jay and *Project Runway* at [www.bravotv.com/Project\\_Runway/The\\_Designers/Jay/](http://www.bravotv.com/Project_Runway/The_Designers/Jay/).

## Memorial Service

### Dr. Ludwig Rebenfeld

Former Philadelphia University Trustee

Thursday, December 9

Noon

All members of the Philadelphia University community are invited to a Memorial Service in honor of former trustee, Dr. Ludwig Rebenfeld, a world-renowned expert in fiber structure and properties. The Memorial Service will be held on Thursday, December 9 at noon in front of the White House Fountain.

Dr. Rebenfeld, a great friend of Philadelphia University and a member of the Board of Trustees from 1965 to 2003, passed away on May 26, 2004, at the age of 76. He served as chair of the Board from 1974 to 1979, and as chair of the Academic Affairs Committee from 1967 to 2003. In recognition of his dedication to this institution and to his profession, Dr. Rebenfeld was awarded an Honorary Doctorate of Textile Science in 1980 and received the University's Centennial Medal in 2003.

# PLAYER OF THE WEEK



**Tayron Thomas**

Men's Basketball  
Junior, Guard/Forward  
Bristol, Pa.  
Truman High School

Tayron Thomas averaged 27.0 ppg and 10.0 rpg in helping the Rams to a 2-0 mark last week. He opened with 25 points and 12 boards in a win at Concordia while posting 29 points with eight boards in a victory over New Haven. Tayron shot 51.4 percent (18-35) from the field for the week, including 50 percent (5-10) from three-point range.

## IN THE NEWS

**President James P. Gallagher** was featured in a story in the December 3 edition of *Philadelphia Business Journal* that focuses on the new major initiatives at Philadelphia University – including construction of The Kanbar Campus Center and the athletic and recreational facility. The article, which also quoted Trustee Chair Elizabeth Gemmill, talked about the transformation of the University in recent years, and highlighted Maurice Kanbar's generous gift to Philadelphia University. The article is available online at [www.philadelphia.bizjournals.com](http://www.philadelphia.bizjournals.com).

**Chris Pastore and Rob Fleming, co-directors of the Engineering and Design Institute at Philadelphia University**, were featured in the December 2 edition of *The Fallser* for recently receiving the 2004 Leader in Sustainable Building award from the Pennsylvania Resources Council.

**Philadelphia University Fernando Tovia, director of the new Industrial and Systems Engineering program**, was featured in the December 2 edition of *The Fallser* for his appointment to the University.

**Philadelphia University's groundbreaking ceremony for the new Kanbar Campus Center** and the announcement of the \$20 million fundraising campaign was featured in the December 2 edition of *The Fallser*.

**Ann Northrup, coordinator of Foundation Design**, was featured in the December 2 edition of the Chestnut Hill Local for her mural, "Growing Up in Germantown," which is painted on Mt. Tabor Baptist Church.

**Clara Henry, director of the Fashion Design Program and several fashion Design students** were featured on WPVI/6ABC in the *Don Polec's World* segment on November 29 and on the NBC10 show *10!* on December 1 for the fashions they created for the current *ExTRASHaganza--Clothing From Waste* exhibit at the EPA in Philadelphia.

**Philadelphia University's groundbreaking ceremony for the new Kanbar Campus Center** and the announcement of the \$20 million fundraising campaign was featured in the November 25 edition of *The Evening Bulletin*.

**SAVE THE DATE**



## Midnight Breakfast

### Kicks Off Exams

**Wednesday, December 15**

11 p.m. to 1 a.m.

Ravenhill Dining Hall

Dining Services is hosting a Midnight Breakfast to kick off final exams and support students as they work to "make the grade." If you are interested in volunteering your time, please call Dining Services at x2924. The breakfast will be available to the entire University community.

## Philadelphia University's Annual Holiday Party

**Wednesday, December 22**

3 to 6 p.m.

Germantown Cricket Club

Philadelphia, PA

RSVP to x2971 or [SpecialEvents@PhilaU.edu](mailto:SpecialEvents@PhilaU.edu) by December 15.

## Theatre Production to Benefit Women's Organizations

*University community participates in the Vagina Monologues play.*

**February 11 and 12**

Philadelphia University faculty, staff and students are participating in this campus production of *the Vagina Monologues* to benefit local women's organizations, such as Women Against Abuse. The play is based on real women's stories and is used as a centerpiece for V-Day, a global movement to stop violence against women and girls, which serves as a catalyst to promote creative events to increase awareness, raise support and revitalize the spirit of anti-violence organizations. To find out more about *the Vagina Monologues*, visit <http://www.vday.org/main.html>.

## Join Us in Rome!

*Alumni, staff, faculty, family and friends to visit The Eternal City.*



[Click here to view brochure](#)

**April 9 through April 15, 2005**

The trip of a lifetime awaits you when our group travels to Rome for an unparalleled experience. See architectural wonders of the ancient world, view art of the masters, and step into the realm of the sacred -- all while enjoying the convenience of a top-rated hotel, fine dining, all transportation, and the camaraderie of friends of the University.

This all-inclusive journey, fully escorted and led by Dr. James Callaghan of the University's Study Abroad Program. A highlight of the trip is a visit to the American Academy to meet with Philadelphia University Architecture and Fashion Merchandising students studying in Rome, where the students will display their work.

To book your tour:

Call Karoline Olcott at AESU-Worldwide at 1.800.638.7640 or

email her at [res@aesu.com](mailto:res@aesu.com) or call Lisbeth Willis, director, Alumni Relations at 215.951.2929, or email her at [alumni@PhilaU.edu](mailto:alumni@PhilaU.edu)

*Please remember to book early as space is limited.*

*To tell us about news or events to be included in This Week@PhilaU, email [SpitaleE@PhilaU.edu](mailto:SpitaleE@PhilaU.edu) by noon on Fridays.*