

@ THIS WEEK PhilaU

A Weekly Newsletter for Faculty, Staff and Students



Top Story
**Graphic Design
Communication Students
Win Kanbar Competition
Scholarships >>**

More news...



**New Interactive
Campus Map >>**



**Design Center Announces
Spring Show >>**



**Watch Dean David Brookstein
Get Cooking with Mama >>**

- **NEWS BRIEFS**
- **EVENTS**
- **PLAYER OF THE WEEK**
- **ON THE WEB**
- **IN THE NEWS**
- **SAVE THE DATE**

NEWS BRIEFS

Graphic Design Communication Students Win Kanbar Design Competition Scholarships

The first of two annual Maurice Kanbar Excellence in Design Competitions at Philadelphia University was held recently, honoring students in the Graphic Design Communication Program. The senior Graphic Design students were asked to design collateral materials for a hypothetical conference on bioethics entitled, *Telling Right From Wrong/ Current Issues in Bioethics: a Symposium on Making Decisions About Ethics and Public Policy*. The students researched current issues in bioethics, chose a theme and visual concept for their projects and created a design prototype for the competition. The entries were judged by a panel including Joel Katz, one of Philadelphia's best known designers who specializes in information design; Evan Goldman, visiting assistant professor of Biology at the University and Soonduk Krebs of SK Design.

At the end of the fall semester, a special presentation was held for the students to showcase their work and interact with the judges. The award winners were announced and presented with scholarship checks and

CAMPUS CONSTRUCTION UPDATE

Check this column each week for the latest news on Philadelphia University's Campus Plan. Check our progress during the new construction. We're on the move!

**Important information
regarding parking changes
effective**

Monday, January 10, 2005.

Faculty and Staff Parking

Faculty and staff parking on Main Campus is now located in the new temporary lot behind Archer Hall. This lot can only be accessed by entering the campus at Downs Hall off of School House Lane. The entrance to this lot is across from the Physical Plant building. **Please note, faculty and staff parking will not be accessible from the Althouse Gymnasium entrance.**

All other existing Main Campus faculty and staff parking will remain the same (i.e., Search Hall, Haggar Hall and Downs Hall lots). Please refer to the Main Campus Parking Map to check specific locations.

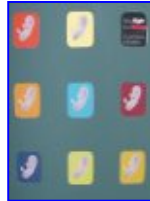
Students

Commuter: The Althouse Hall lot, White House Drive, Hayward Hall lot and Haggar Hall lot are reserved for Graduate, Senior and Junior commuter students with green or gold campus parking permits only.

certificates of achievement. This annual design competition was developed to reward outstanding performance in graphic and industrial design. Award levels are the Gold Award for first place (\$2,000); the Silver Award for second place (\$1,500); and the Bronze Award for third place (\$1,000).



1st Place Gold Award
Adam Engelhart



see detail in
secondary window



2nd Place Silver Award
Tia Ninzeheltzer



see detail in
secondary window



3rd Place Bronze Award
Ryan Becker



see detail in
secondary window



Scholler Residents: All

Scholler resident students will park at Ravenhill. Scholler residents can park in commuter lots on Main Campus on weekdays from 7 p.m. to 7 a.m., and on weekends.

Townhouse Residents:

Townhouse students will continue to park in front of the Townhouses or at Independence Plaza.

General

As you enter campus from Henry Avenue, starting at Althouse and continuing behind the Townhouses, the loop road will be closed during construction.

The Ram Van stop at the Common Thread has been relocated to the rear of the White House.

Additional parking is also available at the Ravenhill Campus for members of the University Community who have registered their vehicles and have current parking permits and the Ram Van loops continually between Ravenhill and the Main Campus. There are also additional security staff on site to direct commuters.

As promised, we will continue to keep you informed about any changes through a dedicated web site, email, voicemail, fliers, posters and *This Week @ PhilaU*. Please send specific questions by email to constructioninfo@PhilaU.edu.

Pictured (l to r front row): Designer Joel Katz, Professor Evan Goldman, first place winner Adam Engelhart, second place winner Tia Ninzeheltzer, third place winner Ryan Becker, Designer Soonduck Krebs and Dennis Kuronen, director of the Graphic Design Communication program. Pictured back center is John Pierantozzi, vice president for Development and Alumni Relations, who was on hand for the Maurice Kanbar Excellence in Design Competition award presentation.

In addition to the first, second and third place winners, Graphic Design Communication students Nicholas Agnew, Fatima Hameed, Bill Hayes, Michael Mayton and John Sokorai, were awarded honorable mention for their work.

Watch Dean David Brookstein Get Cooking with Mama



[Click here to watch a video clip from the show >>](#)
(Requires Real Player)

Design Center Announces Spring Show

April 7- June 10
D.I.Y. Revolution: Zines & other underground publications
The Design Center at Philadelphia University
Curated by Sean Carton



Before the Web transformed our

EVENTS

Monday, January 10

Yoga class

5:30 to 6:30 p.m.
Downs Hall, Room 3
With instructor Dara Berger
Wear comfortable clothes and bring mat.
Fee is \$12

Contact: Lois Janney, x2727

Tuesday, January 11

Wednesday, January 12

Thursday, January 13

Career Services Center Bring A Friend Open House

10 a.m. to 2 p.m.
Hayward Hall, Room 126
Find out what's happening this semester and get your full-time or summer job search off to a great start. Bring a friend to Career Services and you both will be eligible to win gift certificates. Refreshments.

Contact: Career Services, x2738

Phi Phi Weekly Meeting

11a.m. to 1 p.m.
Hayward Hall, Room 109
Contact: Amber Swickard,
510.393.2948

AAP Spring Orientation

11 a.m.
Student Center Lounge
Contact: N. Shearin, x2735

Friday, January 14

Campus Activities Board Bingo

9 p.m. to 11 p.m.
Ravenhill Dining Hall
Contact: Tim Butler, x2744

Saturday, January 15

Sunday, January 16

Gemini Theater Interest Meeting

6:30 p.m. to 9 p.m.
Downs Hall Auditorium
Contact: Janelle Bodenber, x0437

mode of collective communication, self-published zines were the voice of the underground. Served up by populations of visionaries, nuts, obsessives, and fans of everything from punk rock music to PEZ dispensers, zines went where commercial magazines wouldn't (or couldn't) go.

D.I.Y. Revolution is an exhibition that chronicles the golden age of zines in the 80's and early 90's. From hand-written broadsheets to edgy comics, mail art, and even artifacts impossible to categorize, ***D.I.Y. Revolution*** shows what happens when people must be heard and take matters into their own hands.

For information on this upcoming show or recent exhibits, contact The Design Center at 215.951.2860 or thedesigncenter@PhilaU.edu or visit <http://www.philau.edu/designcenter>.

NEW ON THE WEB



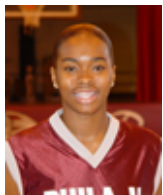
Cross Campus in a Flash: New Interactive Map Online

Designed to scale and equipped with advanced navigation tools, Philadelphia University's new interactive Macromedia Flash map is now online. The map not only reflects the campus today, but plans for the University's construction activity, including The Kanbar Campus Center and extension to Althouse Hall as well as beautification and parking improvements.

From first-time visitors to current students and faculty, returning alumni to parents and families, it is hoped that Philadelphia University's interactive map will enrich the campus experience for all.

To access the map, visit www.PhilaU.edu/UniMap. If you have questions, please contact the Office of Public Relations at 215.951.2851 or email webmaster@PhilaU.edu.

PLAYER OF THE WEEK



Samara Speakes

Women's Basketball

Senior, Forward
Philadelphia, Pa.
Bodine High School

Samara Speakes posted 29.5 ppg and 5.5 rpg in helping the Lady Rams to a 1-1 mark for the week. She opened play with a team-high 27 points in a loss at Queens College on January 5. She came back to score a game-high 32 points, including five three-point field goals, in a win at home over Dowling College on January 8. Speakes shot 48.8 percent (21-43) from the field for the week including 39.0 percent (7-18) from beyond the three-point arc. She is now just eight points shy of Darlene Hildebrand (1,695 points) for fourth-place all-time in school history in scoring with 1,688 points.

IN THE NEWS

Jane Likens, assistant professor of Fashion Design, was featured in the December 30- January 5 edition of *The Main Line Times* in a story on the growing popularity of knitting.

Philadelphia University and its transformation over the last two decades was the subject of a January 4 *Philadelphia Inquirer* article on how higher education institutions can successfully adapt to changes and continue to thrive. **President Gallagher, Marion Roydhouse, dean of the School of General Studies and Sean Carton, dean of the University's new design school**, were quoted in the article.

Hilary Jay, director of The Design Center at Philadelphia University, wrote about the diverse and historic textile collection at The Design Center in the Winter 2004-05 edition of *Modernism magazine*.

Philadelphia University Fashion Design student Ann Rodgers, who was recently awarded a scholarship in recognition of her academic achievements, was featured January 6 in *The Morning Call* of Allentown, Pa., her hometown newspaper.

SAVE THE DATE

Film For Thought Series Spring 2005

Thursday, January 20

The Sixth Sense

An FYE: Finding Philadelphia Showing

February 1

Ray

February 9

Super Size Me

March 16

Thirteen

All movies begin at 6 p.m. in the Student Center Lounge For more information, contact Student Development at x2634.

Design X Fashion Show

Tuesday, January 25

Downs Hall Auditorium

Philadelphia University Celebrates Our Graduates



Thursday, February 3

Snow Date: Friday, February 4

8 to 10 p.m.

Ravenhill Dining Hall

Music, door prizes, photo ops and more.

RSVP to academicaffairs@PhilaU.edu by January 25.

Sponsored by Academic Affairs, Student Life and Alumni Relations.

Theatre Production to Benefit Women's Organizations

University community participates in the Vagina Monologues play.

February 11 and 12

Philadelphia University faculty, staff and students are participating in this campus production of *the Vagina Monologues* to benefit local women's organizations, such as Women Against Abuse. The play is based on real women's stories and is used as a centerpiece for V-Day, a global movement to stop violence against women and girls, which serves as a catalyst to promote creative events to increase awareness, raise support and revitalize the spirit of anti-violence organizations. To find out more about *the Vagina Monologues*, visit <http://www.vday.org/main.html>.

Join Us in Rome!

Alumni, staff, faculty, family and friends to visit The Eternal City.



April 9 through April 15, 2005

The trip of a lifetime awaits you when our group travels to Rome for an unparalleled experience. See architectural wonders of the ancient world, view art of the masters, and step into the realm of the sacred -- all while enjoying the convenience of a top-rated hotel, fine dining, all transportation, and the camaraderie of friends of the University.

This all-inclusive journey, fully escorted and led by Dr. James Callaghan of the University's Study Abroad Program. A highlight of the trip is a visit to the American Academy to meet with Philadelphia University Architecture and Fashion Merchandising students studying in Rome, where the students will display their work.

To book your tour:

Call Karoline Olcott at AESU-Worldwide at 1.800.638.7640 or

email her at res@aesu.com or call Lisbeth Willis, director, Alumni Relations at 215.951.2929, or email her at alumni@PhilaU.edu

Please remember to book early as space is limited

To tell us about news or events to be included in This Week@PhilaU, email SpitaleE@PhilaU.edu by noon on Fridays.