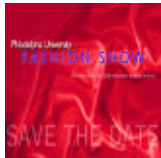


# @ THIS WEEK PhilaU

A Weekly Newsletter for Faculty, Staff and Students

More news...



**Save the Date: Annual Fashion Show >>**



**A New Look For Athletics On the Web >>**



**Student Design Exhibition Opens Next Week >>**

- NEWS BRIEFS
- EVENTS
- PLAYER OF THE WEEK
- ON THE WEB
- IN THE NEWS
- SAVE THE DATE

## NEWS BRIEFS

### New Building Models On Display



As construction activity progresses and the University undergoes this exciting transformation, we know curiosity is peaked about the new additions to campus. So come check out the models of The Kanbar Campus Center and recreational and athletic facility currently under construction, which are on display in the Paul J. Gutman Library. Stop by and take a look at these detailed miniature versions of the buildings.



Top Story  
**New Building Models on Display>>**

## CAMPUS CONSTRUCTION UPDATE

*Check this column each week for the latest news on Philadelphia University's Campus Plan. Check our progress during the new construction. We're on the move!*

This week marks a new phase in the construction site preparation. This morning, the Garage in the Althouse lot was cleared, with other buildings along White House Drive scheduled to come down in the next few weeks. Look for more information about special construction events for the University Community coming soon.

### ***Parking Reminder***

#### ***Faculty and Staff Parking***

Faculty and staff parking on Main Campus is located in the new temporary lot behind Archer Hall (in addition to the existing parking in the Search, Haggar and Downs Hall lots). This temporary lot can only be accessed by entering the campus at Downs Hall off of School House Lane. Please refer to the Main Campus Parking Map to check specific locations.

#### ***Students***

**Commuter:** The Althouse Hall lot, White House Drive, Hayward Hall lot and Haggar Hall lot are reserved for Graduate, Senior and Junior commuter students with green or gold campus parking permits only.

**Scholler Residents:** All Scholler resident students will park at Ravenhill. Scholler residents can park in commuter

## Still in the Game

*Jay McCarroll, former Fashion Design Student at Philadelphia University, continues as reality show contestant.*



Get the latest on Jay and Project Runway at [www.bravotv.com/Project\\_Runway/The\\_Designers/Jay/](http://www.bravotv.com/Project_Runway/The_Designers/Jay/).

## Annual FIA Fashion Show Date Set



The annual Philadelphia University FIA Fashion Show is set for Saturday, April 30. Agagin this year, this electrifying showcase of Fashion Design student talents will be presented at the Academy of Music. Mark you calendar and look for more information coming soon!

## NEW ON THE WEB

**Athletics at Philadelphia University Gets a New Look Online**

lots on Main Campus on weekdays from 7 p.m. to 7 a.m., and on weekends.

### Townhouse Residents:

Townhouse students will continue to park in front of the Townhouses or at Independence Plaza. Additional parking is also available at the Ravenhill Campus for registered vehicles and the Ram Van loops continually between Ravenhill and the Main Campus.

We will continue to keep you informed about any changes through a dedicated web site, email, voicemail, fliers, posters and *This Week @ PhilaU*. Please send specific questions by email to [constructioninfo@PhilaU.edu](mailto:constructioninfo@PhilaU.edu).

## EVENTS

### Monday, January 17

#### Yoga class

5:30 to 6:30 p.m.  
Downs Hall, Room 3  
With instructor Dara Berger  
Wear comfortable clothes and bring mat.  
Fee is \$12

**Contact:** Lois Janney, x2727

### Tuesday, January 18

#### Cornerstone Weekly Meeting

8 p.m. to 11 p.m.  
Tuttleman Auditorium

**Contact:**

### Wednesday, January 19

#### Delta Phi Epsilon Pretzel Sale

8 a.m. to 2 p.m.  
Hayward Hall Lobby  
**Contact:** Kassie Ludwig, [Ludwig2@philau.edu](mailto:Ludwig2@philau.edu)

#### Reference USA Online Resource

1 to 2 p.m.  
Hayward Hall, Room 126  
Register on CareerLink to attend  
**Contact:** Career Services, x2930

#### "Tank" – Sigma Nu Spring Rush Event

8 p.m. to 9 p.m.  
Ravenhill Dining Hall, Breakout Room  
**Contact:** Kevin Niemeyer, x0453



A new Athletics web site leaps off the page at [www.Philau.edu/Athletics](http://www.Philau.edu/Athletics). Easier access to each team, its players and stats as well as the week's top stories are just a click away. Link to numerous resources in college sports on the web, or find out more about how you can get in on the action and participate in all that Philadelphia University Athletics has to offer.

## PLAYER OF THE WEEK



**Samara Speakes**  
Women's Basketball  
Senior, Forward  
Philadelphia, Pa.  
Bodine High School

Samara Speakes averaged 25.0 ppg and 10.5 rpg in helping the Lady Rams to a pair of key New York Collegiate Athletic Conference (NYCAC) victories last week. She poured in a game-high 28 points and collected eight rebounds in a win over Adelphi University at home to open the week. She came back to score a game-high 22 points, including the game-winning three-pointer, in a 78-75 triple-overtime win at Southampton College. With her performance against Adelphi, Speakes moved into fourth-place all-time in school history in scoring with over 1,700 career points.

## Thursday, January 20

### BSU Bi-Weekly Meeting

11a.m. to 12 p.m.  
Downs Hall, Room 1  
**Contact:** SGA, x2894

### Student Government Association – Interest Meeting

11a.m. to 1 p.m.  
Downs Hall, Room 6  
**Contact:** x2894

### Phi Phi Weekly Meeting

11a.m. to 1 p.m.  
Hayward Hall, Room 109  
**Contact:** Amber Swickard,  
510.393.2948

### Environmental Career Conference

Rebroadcast  
11 a.m. to 1 p.m.  
Hayward Hall, Room 207  
**Contact:** Career Services, x2930

### Film for Thought

The Sixth Sense  
An FYE: Finding Philadelphia  
Viewing  
6 p.m.  
Student Center Lounge  
**Contact:** Student Development,  
x2634

## Friday, January 21

### Lecture – Principles of Sustainability

12 p.m. to 1 p.m.  
Media Classroom – Gutman Library  
**Contact:** Rob Fleming, [flemingr@philau.edu](mailto:flemingr@philau.edu)

## Saturday, January 22

### CAB – “Comedy Cabaret”

6 p.m. to 10:30 p.m.  
Ravenhill Dining Hall  
**Contact:** Tim Butler, x2744

## Sunday, January 23

## IN THE NEWS

Philadelphia University Fashion Design and Merchandising students Jessica Lowing, Denise Baumgardner, Jackie Messier, Jennifer Strand, Marissa Confair, Stephanie Rochonchou, Peri Sokol and Justin Burford, were featured in the *Chestnut Hill Local* on January 13 for donating curtains they designed in the Survey of Apparel course to St. Vincent De Paul Church in Germantown.

Tayron Thomas, Men's Basketball player, was highlighted in the *Philadelphia Inquirer* on January 12 for being named player of the week by the New York Collegiate Athletic Conference and leading NYCAC in scoring.

## SAVE THE DATE

### Design X Fashion Show

Tuesday, January 25

Downs Hall Auditorium

11:30

Tickets can be purchased in Hayward Hall Lobby this Thursday and Friday or at the door. Tickets are \$2 in advance, \$3 at the door. Please contact the Fashion Design Department at x2785 for more information.

### Film For Thought Series Spring 2005

Thursday, January 20

*The Sixth Sense*

An FYE: Finding Philadelphia Showing

February 1

*Ray*

February 9

*Super Size Me*

March 16

*Thirteen*

**All movies begin at 6 p.m. in the Student Center Lounge For more information, contact Student Development at x2634.**

## Upcoming Design Center Exhibitions

January 28 to March 15



**POSED:** a revealing mix of student design

A student-curated exhibition featuring architecture, digital media, fashion, graphics, industrial design, interior design and textile design.

### Opening Reception

Friday, January 28

4:30 to 7:30 p.m.

April 7 to June 10

## ***D.I.Y. Revolution: Zines & other underground publications***

Curated by Sean Carton



***D.I.Y. Revolution*** is an exhibition that chronicles the golden age of zines in the 80's and early 90's. From hand-written broadsheets to edgy comics, mail art, and even artifacts impossible to categorize, ***D.I.Y. Revolution*** shows what happens when people must be heard and take matters into their own hands.

For information on these upcoming shows or recent exhibits, contact The Design Center at 215.951.2860 OR [thedesigncenter@Philau.edu](mailto:thedesigncenter@Philau.edu) OR Visit [www.philau.edu/designcenter](http://www.philau.edu/designcenter).

## **DUI: A Powerful Lesson**

***Nationally recognized speaker Mark Sterner to visit Campus.***

**Wednesday, February 2**

**7 p.m.**

**Tuttleman Auditorium**

Mark Sterner's life changed drastically when three of his best friends and fraternity brothers were killed in a drinking and driving car crash during spring break. Mark was at the wheel of the car, intoxicated. Sterner ended up with three felony manslaughter convictions and spent three years in a Florida prison. "Would my friends be married now?" Sterner wonders. "Would they have kids? I don't know. I'll wonder what if for the rest of my life." He doesn't want others to have to ask themselves the same questions, so Sterner shares his message with high school and college students across the country. Sponsored by Student Development, Student Activities and Athletics. For more information, contact Student Development at x2856.

**Philadelphia University Celebrates Our Graduates**



### **Thursday, February 3**

Snow Date: Friday, February 4

8 to 10 p.m.

Ravenhill Dining Hall

Music, door prizes, photo ops and more.

**RSVP to [academicaffairs@PhilaU.edu](mailto:academicaffairs@PhilaU.edu) by January 25.**

*Sponsored by Academic Affairs, Student Life and Alumni Relations.*

## **Theatre Production to Benefit Women's Organizations**

*University community participates in the Vagina Monologues play.*

**February 11 and 12**

Philadelphia University faculty, staff and students are participating in this campus production of *the Vagina Monologues* to benefit local women's organizations, such as Women Against Abuse. The play is based on real women's stories and is used as a centerpiece for V-Day, a global movement to stop violence against women and girls, which serves as a catalyst to promote creative events to increase awareness, raise support and revitalize the spirit of anti-violence organizations. To find out more about *the Vagina Monologues*, visit <http://www.vday.org/main.html>.

## **Join Us in Rome!**

Alumni, staff, faculty, family and friends to visit The Eternal City.



**April 9 through April 15, 2005**

To book your tour:

Call Karoline Olcott at AESU-Worldwide at 1.800.638.7640 or

email her at [res@aesu.com](mailto:res@aesu.com) or call Lisbeth Willis, director, Alumni Relations at 215.951.2929, or email her at [alumni@PhilaU.edu](mailto:alumni@PhilaU.edu)

*Please remember to book early as space is limited*

*To tell us about news or events to be included in This Week@PhilaU, email [SpitaleE@PhilaU.edu](mailto:SpitaleE@PhilaU.edu) by noon on Fridays.*

---