

# This Week @ PhilaU

March 8, 2004

A Weekly Newsletter for Faculty, Staff and Students

## NEWS BRIEFS

### WebAdvisor! for Students Available March 18



#### Getting the grade

Beginning March 18, undergraduate students can access midterm grades through *WebAdvisor*. Later this semester, students will be able to review course schedules, check account status, access financial aid information and register for classes online.

#### WebAdvisor is easy and we're here to help

Join us for *WebAdvisor* demonstrations throughout the day on Thursday, March 18 in Downs D9 from 9 a.m. to 8 p.m. Refreshments will be served. Check your Philadelphia University email account or go to the University's homepage at [www.PhilaU.edu](http://www.PhilaU.edu) for more information.

## Don't Miss

### Hopping Fences: Influences in modern living

A collaboration between The Design Center at Philadelphia University and the Philadelphia Art Alliance.

**Hopping Fences runs through May 2, 2004  
at the Philadelphia Art Alliance**  
251 South 18<sup>th</sup> Street, Philadelphia, Pa 19103

**Gallery Hours:** Tuesday through Saturday 11 a.m. to 5 p.m., Sunday 11 a.m. to 3 p.m.  
Suggested Donation \$5; Group tours for children, school groups, and adults are available by appointment.

For more information, call 215.951.2860 or send an email to [thedesigncenter@PhilaU.edu](mailto:thedesigncenter@PhilaU.edu).

## EVENTS

### Monday, March 8

#### YOGA

5:30 to 6:30 p.m.

Down Hall Room 6

All are welcome. \$10 at the door.

Every Monday throughout the semester.

Contact: Lois Janney, x2727

### Saturday, March 13

#### Men's Basketball vs. New York Institute of Technology NCAA Division II Tournament

2:30 p.m.

Lowell, Mass.

Contact: Athletics, x2720

## SAVE THE DATE

### Donate Blood

Tuesday, March 23

9 a.m. to 2 p.m.

Downs Hall Auditorium

Schedule an appointment at <http://PhilaU.givesblood.org> or call x2743.

### School of Architecture and Design

#### Spring Lecture Series

Wednesday, March 24

6 p.m.

Tuttleman Center Auditorium

*Spirit of Space*

Barbara Chenicek, OP and Rita Schiltz, OP

Interior Designers

Inai Studio, Michigan

Sponsored by Granary Associates,

Philadelphia

Contact: School of Architecture and Design,

x2896

## SAVE THE DATE



Thursday, March 25  
3 to 6 p.m.  
Paul J. Gutman Library, Second Floor

Log onto [www.PhilaU.edu/Events/DesignExpo](http://www.PhilaU.edu/Events/DesignExpo) or call the Career Services Center at 215.951.2930.

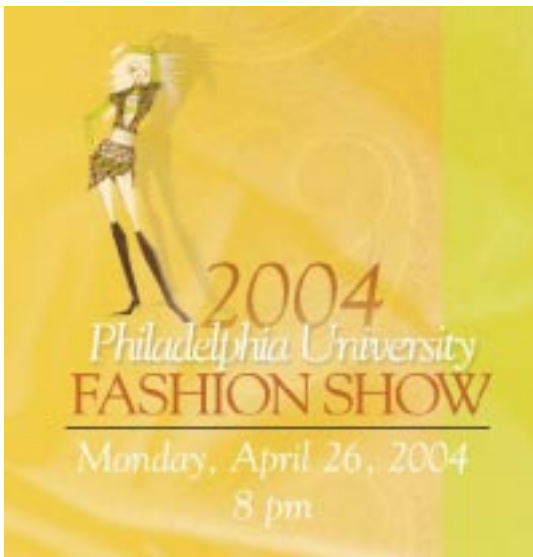
## Time, Talent & Treasure 2004

Friday, March 26  
6 to 10 p.m.  
The National Constitution Center

A historic setting to celebrate the past and envision the future of Philadelphia University with President James P. Gallagher. Presented by Philadelphia University's Alumni Association. Visit <http://www.PhilaU.edu/alumni/schedule.html> or call Alumni Relations at 215.951.2929 for more information.

## 2004 FIA Annual Fashion Show

Monday, April 26  
8 p.m.  
Academy of Music



### Tickets On Sale Soon

Contact Public Relations at x2851 for more information.

## PHILADELPHIA UNIVERSITY WELCOMES

### Myrles T. Adams

Cook, Dining Services

### Meghann A. Fee

Counselor, Admissions

### Tara Johnston

Counselor, Financial Aid

### Dori L. Levy

Student Employment Coordinator,  
Financial Aid

### Thomas G. Murphy

Cook, Dining Services

### Allen Poindexter

Grill, Dining Services

### Evelin J. Rivera Soto

Pantry, Dining Services

### Patricia A. Wilson

Cashier, Dining Services

### Erin Wooley

Secretary, Physical Education, Athletics

## Staff Notes

**William Ebner** has been promoted to Bicycle Patrol Officer, Safety & Security

**Richard Kmeic** has been promoted to Patrol Officer, Safety & Security

**James D. Sawyer** has been promoted to Assistant Director, Admissions

## IN THE NEWS

**Hilary Jay**, director of **The Design Center at Philadelphia University**, was featured in the Spring 2004 issue of *Philadelphia Style* magazine. The article focuses on Jay's contribution to, and impact on, design in Philadelphia.

**The Design Center's latest exhibit, *Hopping Fences: Influences in Modern Living***, which is currently on display at the Philadelphia Art Alliance (251 S. 18<sup>th</sup> St.), was also featured in the Spring issue of *Philadelphia Style*.

**Josh Owen**, assistant professor of **Industrial Design**, was recently featured in an article for *Cornell Magazine*.