

This Week @ PhilaU

A Weekly Newsletter for Faculty, Staff and Students

NEWS BRIEFS

designwithgoodtaste Opens

Digital, Graphic and Industrial Design
Senior Show at the Marketplace



Philadelphia University's School of Architecture and Design opened **designwithgoodtaste** on Friday at the Marketplace Design Center, 2400 Market Street, Philadelphia.

designwithgoodtaste,

the Senior Show for the Digital, Graphic and Industrial Design Programs at Philadelphia University, is a culmination of the academic careers of dozens of students about to take their place as the next generation of design professionals. Held this year for the first time at the Marketplace Design Center in Center City Philadelphia, **designwithgoodtaste**, is a vibrant and dynamic showcase of the creative talents of students who stand to make their mark on the world of design in the 21st Century.

"The Marketplace in Philadelphia is a wonderful venue for all design students to exhibit their projects. It's an enticing backdrop that enhances the impact of the work and accomplishments of these young men and women," says Professor Gotz Unger, director of Philadelphia University's Industrial Design Program. In addition, the actual **designwithgoodtaste** exhibit space, including oversized, suspended panels that glide on cable among large columns and angled walls, pedestals to display 3D work and interactive computer terminals — as well as all promotional materials — were created by Philadelphia University design students featured in the show.

During the opening reception, the winners of **The Maurice Kanbar '52 Excellence in Design Competition at Philadelphia University** were announced. This year's Graphic Design portion of the competition involved the design of packaging for the Rex Gourmet Coffee Grinder, a product developed by Mr. Kanbar.

The award-winning Graphic Design Communication students are:

FIRST PLACE

Tara Rowe

SECOND PLACE

EVENTS

Monday, May 10

Creativity: Design Meets Technology Conference

May 10 and 11

Sponsored by the School of Textiles and Materials Technology and The Office of Continuing and Professional Studies

For more info: www.PhilaU.edu/continuinged

TLTR Tech Expo

The Gutman Library lower level and Media Classroom

1 to 3 p.m.

Staff will be on hand to answer questions about ILL, EZBorrow, RefWorks, Library Databases, Media Services, Blackboard, ERes, VPN Pool, Outlook Web Access, Web Advisor, Outlook XP, Office XP, Scanning, Burning CDs and more! Plus two sneak previews of the new Blackboard 6.1 upgrading this summer. Snacks will be available in the lobby outside the Media Classroom.

No registration necessary for this session.

Contact: Kris Wiemer, wiemerk@PhilaU.edu

Resume Development/Cover Letter Writing

Sponsored by Career Services Center
1 to 2:30 p.m.

The Tuttleman Center Room 212

Contact: Trish Shafer, x2930

Job Search Strategies Workshop

Sponsored by Career Services Center
1 to 2:30 p.m.

The Tuttleman Center Room 213

Contact: Trish Shafer, x2930

Interview Like a Pro Workshop

Sponsored by Career Services Center
3 to 4:30 p.m.

The Tuttleman Center Room 212

Contact: Trish Shafer, 2930

YOGA

5:30 to 6:30 p.m.

Downs Hall Room 6

\$10 at the door

Contact:

Anne Stewart
THIRD PLACE
Jill Horan

Student capstone projects were evaluated for the Industrial Design segment of the contest.

The award-winning Industrial Design students are:

FIRST PLACE

Shaun Smith
Vincent Minieri
Curtis Adamo
Andrew Johnson

SECOND PLACE

Jarrett Sing
Blair Sonnen

THIRD PLACE

Kate Reynolds

Award levels are the Gold Award for first place (\$2,000); the Silver Award for second place (\$1,500); and the Bronze Award for third place (\$1,000) in both design disciplines.



Pictured above: The first place Industrial Design winners with John Pierantozzi, vice president for Development and Alumni Relations.

designwithgoodtaste Senior Design Show will run through May 15, with a closing reception on Saturday, May 15 at 4 p.m. www.PhilaU.edu/designwithgoodtaste



First-year Design Students Awarded at Push Pin Exhibition

Philadelphia University's annual Push Pin Exhibition celebrates the student work from the Design Foundation Program. This year, 45 awards were given in categories such as Design Sketchbook, Graphic Design, Industrial Design, Interior Design, Fashion Design and Architecture.

Tuesday, May 11

Integrating Atomic Learning and Other Multimedia Resources

Gutman Library Media Classroom
10 to 11:30 a.m.

Contact: Kris Wiemer, wiemerk@PhilaU.edu

Integrating Technology through the Creation of a Hybrid Course

Downs Hall Room 2

1 to 3 p.m.

Using the "Classroom Flip" curriculum created by J. Wesley Baker at Cedarville College, this workshop will introduce a different approach technology integration.

Contact: Kris Wiemer, wiemerk@PhilaU.edu

Resume Development/Cover Letter Writing

Sponsored by Career Services Center

1 to 2:30 p.m.

The Tuttleman Center Room 212

Contact: Trish Shafer, x2930

Job Search Strategies Workshop

Sponsored by Career Services Center

1 to 2:30 p.m.

The Tuttleman Center Room 213

Contact: Trish Shafer, x2930

Interview Like a Pro Workshop

Sponsored by Career Services Center

3 to 4:30 p.m.

The Tuttleman Center Room 212

Contact: Trish Shafer, x2930

Wednesday, May 12

Active Learning with Microsoft PowerPoint

10 to 11:30 a.m.

The Tuttleman Center Room 213

The workshop will explore a variety of strategies you can employ to help your students become more active in the learning process.

Contact: Kris Wiemer, wiemerk@PhilaU.edu

Learning Theory and Active Learning

With Russell Pritchard, Assistant Professor, Instructional Design & Technology

The Tuttleman Center Room 213

1 to 3 p.m.

Explore the behavioral, cognitive and constructive learning theories and how they can help you to create a more active learning environment for your courses.

Contact: Kris Wiemer, wiemerk@PhilaU.edu

Evaluating An Offer Workshop

Sponsored by Career Services Center

1 to 2:30 p.m.

The Tuttleman Center Room 212

Contact: Trish Shafer, x2930

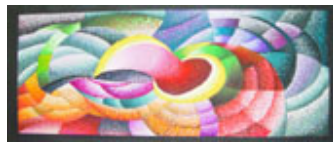
First 30/60/90 Days on the Job Workshop



First-year Design Students Awarded at Push Pin Exhibition (continued...)

Left: Megan Stanger receives a Push Pin Award from Carol Fixman, vice president of Academic Affairs. Miss Stanger received first prize for Design I-2D, Second prize for Design II-2D and Second Prize for Graphic Design Drawing II.

Right: Marissa Confair won the annual Academic Affairs award for her work, "Newton's Rings." Every year, the Academic Affairs Award piece is framed and hung in the White House.



Students Take a Step Back in Time for Semester project

Four Philadelphia University Architecture students, Victoria Inman, Doug Rotondo, Josh Toth and Jeremy Samet, spent a semester this year enrolled in the Historic Preservation Class taught by Professor William Breard. Their project was to research homes on West Walnut Lane in Germantown, which is part of the Tulpehocken Station Historic District. The students studied about 30 homes over the semester, some of which were selected as the featured homes on the 2004 Philadelphia Open House tour, "Victorian Germantown," held on Saturday. In addition, Philadelphia University Professors, Nancy Howard, Clair Owen and Beth Emmett were among the house tour organizers, which is presented by the Maxwell Mansion.



Student project research, from the Historic Preservation Class, including historical images and deeds, was displayed during the 2004 Philadelphia Open House tour.



Sponsored by Career Services Center
3 to 4:30 p.m.

The Tuttleman Center Room 212

Contact: Trish Shafer, x2930

Thursday, May 13

Using Electronic Tools to Respond to Student Writing

With John Eliason, Director of the Writing Program

1 to 3 p.m.

The Tuttleman Center Room 213

Explore the pros and cons of using electronic tools in the writing process.

Contact: Kris Wiemer, wiemer@PhilaU.edu

Using Blogs and RSS Feeds for PD & Enhanced Learning

With Steven Bell, Director of the Paul J. Gutman Library

1 to 3 p.m.

The Tuttleman Center Room 213

Blogs and RSS have become very popular topics in education in recent years. This will be a hands-on exploration of the blog/RSS phenomenon.

Contact: Kris Wiemer, wiemer@PhilaU.edu

Friday, May 14

RefWorks: Using Personal Bibliographic Software for Improving Research and Citing

With Steven Bell, Director of the Paul J. Gutman Library

Search Hall Room 303

10 to 11:30 a.m.

Using RefWorks, faculty can quickly locate articles, book chapters, web sites. Another important function of RefWorks is its ability to create bibliographies and footnotes that are formatted in dozens of standard citation types (e.g., APA, MLA, etc.).

Contact: Kris Wiemer, wiemer@PhilaU.edu

Introduction to Adobe Photoshop

With Joanne Peca, Manager of Computing Support, OIT

The Tuttleman Center Room 213

10 to 11:30 a.m.

Attendees will be introduced to the basics of Adobe Photoshop.

Contact: Kris Wiemer, wiemer@PhilaU.edu

Saturday, May 15

Sunday, May 16

Environmental Science Students Present Project Findings

Students in the Natural Resource Management capstone course in the new Environmental and Conservation Biology program, spent the semester collecting data on wildlife, plants, water resources, soil, and environmental hazards all semester and then wrote two 50-page technical management plans for restoration of the Kentucky Warbler (a bird species that migrates from the neotropics) and the American Chestnut (a tree species that is virtually extinct in the United States). They presented their findings at Schuylkill Center for Environmental Education (SCEE) on April 28.



Environmental and Conservation Biology students Richard Tustin, Amanda Bryant, Christina Czarnecki, Evan Halscheid and Luke Bourassa.



Research photo: Dennis Burton, director of Land Restoration at SCEE, with students Luke Bourassa and Evan Halscheid.

PA Students Make a Run for It



Pictured above l to r: Physician Assistant Studies students Kimberly Dreher, Rachel Maser, Billy Drew and David Mumma, with Michael "Rocky" Rackover, associate professor and interim program director and academic coordinator, Physician Assistant Studies program (center), participated in this year's 10-mile Broad Street Run to benefit the American Cancer Society.

Creativity: Design Meets Technology Conference

The School of Textiles and Materials Technology, together with The Office of Continuing and Professional Studies, is presenting a two-day conference, May 10 and 11, for design directors and stylists, textile CAD directors and designers, educators, engineers and business managers who wish to broaden their knowledge of the integration of creative design and technology.

For more details regarding this conference that offers a superior lineup of industry professionals and covers many topics related to the integration of design and technology in digital printing, visit the website at www.PhilaU.edu/continuinged.

Axis First Annual 5th Year Student Show

Wed. May 5, 2004-Sunday, May 16, 2004
Roxborough Farmers Market, 6148 Ridge Avenue
Monday through Friday 3 p.m. to 7 p.m.,
Saturday and Sunday, 11 a.m. to 1 p.m.
Closing Reception May 16, 2004
Following Philadelphia University Commencement Ceremony
Sponsored by the School of Architecture and Design
For more information, contact: Lisa Jaffe at 215.951.2828.

SAVE THE DATE

2004 Alumni Golf Invitational

Honoring Herb Magee '63
Head Men's Basketball Coach

June 23, 2004
Chesapeake Bay Golf Club, North East, Maryland

Visit www.philau.edu/alumni/pdf/ChesapeakGolfInvite.pdf for more information.

To tell us about news or events to be included in *This Week@PhilaU*, please contact Emily Spitale, Public Relations at 215.951.2851 or SpitaleE@PhilaU.edu by noon on Fridays.