

# This Week @ PhilaU

A Weekly Newsletter for Faculty, Staff and Students

## NEWS BRIEFS



## Philadelphia University Breaks Ground for New Kanbar Campus Center

Equipped with shovels and hard hats, Philadelphia University President James P. Gallagher and members of the Board of Trustees were joined by faculty, students, and friends at the formal ground-breaking for the new Campus Center on November 22. The event recognized Maurice Kanbar's generous \$6 million gift to the University in support of the new building. Mr. Kanbar's gift, a grant from the Kanbar Charitable Trust administered by the Jewish Community Endowment Fund, is the largest private donation ever made to Philadelphia University.

"I'm privileged to support this great university," Maurice Kanbar said at the ground-breaking, shortly before lifting a shovelful of dirt where the new campus center will be built.

The new addition to the University is a 72,000-square-foot building designed to

## CAMPUS PLAN UPDATE

Check this column each week for the latest news on Philadelphia University's Campus Plan. Check our progress and any relocation plans as we get ready for the new construction. We're on the move!

**Groundbreaking ceremonies for the new campus center, to be named in honor of alumnus Maurice Kanbar, held Monday, November 22**

## EVENTS

### Monday, November 22

#### Yoga

5:30 to 6:30 p.m.  
Downs Hall Room 3  
Please bring a mat. Cost is \$10 per class.  
**Contact:** Lois Janney, x2727

#### Minaret Dinner

6 p.m.  
Student Center Lounge  
**Contact:** Murad Oomer, 215.869.3057

#### Free Open Swimming

All faculty, staff and students are welcomed.  
7:30 to 9:30 p.m., Monday and Wednesday evenings  
Penn Charter High School  
A lifeguard will be on duty.  
**Contact:** Brad Koch, x2723

### Tuesday, November 23

#### Graduate Student Association Meetings

11 a.m. to 12:30 p.m.  
Hayward Hall Room 111  
The GSA allows graduate students to plan an active role at Philadelphia University. Meetings discuss how to make the graduate school experience more rewarding.  
**Contact:** Jaime C. Ball, President, 215.425.6622

#### Thanksgiving Lunch

11 a.m. to 1 p.m.  
Hayward Hall Room 209  
Sponsored by Science in Action, the American Chemical Society, and Asclepius (Pre-Med) Society. All you can eat food for all tastes from vegetarian to meat eater; we'll have all the usual

complement the varied architectural styles on campus and will feature walls of windows to optimize the natural setting. Inside it features meeting areas; a 192-seat flexible, multi-use room; a campus store; student life offices; a cafe and dining facilities. Work on the project is scheduled to start by the end of this year and the building is scheduled to open in August 2006.

"We are grateful for the generosity of Maurice Kanbar and his support for our new campus center. This striking facility will serve as an enduring centerpiece for the Philadelphia University campus and as a hub for learning, culture and social activities for the University community," said President Gallagher. "We're convinced this building will be transformational, and will truly energize this great campus."

At the groundbreaking, Elizabeth H. Gemmill, chair of the Board of Trustees, also announced the University's \$20 million fundraising campaign in support of the new building and other campus initiatives. "This is the most ambitious campaign in the 120-year history of the University," Ms. Gemmill said, noting that more than \$16 million has already been pledged to meet the goal.

Mr. Kanbar, a 1952 graduate of Philadelphia University, is a businessman, inventor and founder of the company that makes SKYY Vodka, known for its distinctive cobalt blue bottle. An avid movie fan, he created New York's first multiplex theater, as well as the D-Fuzz-It Sweater Comb. He also is the author of *Secrets from an Inventor's Notebook*. An enthusiastic supporter of Philadelphia University and its students, Mr. Kanbar was awarded an Honorary Doctor of Science in 2003. That same year, he established the Maurice Kanbar Excellence in Design Competition, an annual contest that awards monetary prizes to students in the University's Graphic and Industrial Design programs.

"Effective education, which is vitally important in all walks of life, is built on knowledge that is gained both in and outside of the classroom. So, it gives me great pleasure to support Philadelphia University, and to be a part of this exciting endeavor," Maurice Kanbar said of his gift in support of the new campus center.

The \$25 million Kanbar Campus Center was designed by the architectural firm Shepley Bulfinch Richardson and Abbott, which specializes in educational facilities. The Boston-based firm also designed the University's Paul J. Gutman Library, which won the 1993 Louis I. Kahn Award for design excellence.

## Professor's Mural Dedicated at Local Church

Thanksgiving foods and more! The cost is \$5 for tickets purchased in advance and \$7 at the door.

**Contact:** Amanda Bryant, BRYANT2@PhilaU.edu

### Cornerstone Weekly Meeting

9 to 10:30 p.m.

Student Center Lounge

**Contact:** Ellen Nave, 215.843.3102

### Wednesday, November 24

#### Free Open Swim

All faculty, staff and students are welcomed.

7:30 to 9:30 p.m. every Monday and Wednesday evening at Penn Charter High School. A lifeguard will be on duty.

**Contact:** Brad Koch, x2723

### Thursday, November 25

#### Thanksgiving Holiday

No Classes

### Friday, November 26

#### Thanksgiving Holiday

No Classes

### Saturday, November 27

#### Philadelphia University v. University of the Sciences

1:30 p.m.

The Palestra

Contact: Athletics, athletics@PhilaU.edu

### Sunday, November 28



*Professor Ann Northrup (center) celebrates the dedication of her mural with Lynn Fields-Harris, executive director of Center in the Park (left) and Jane Golden, director of Philadelphia's Mural Arts Program (right).*



A new mural depicting the varied life of Germantown's residents – from children riding bikes to seniors watching over the neighborhood -- was dedicated November 19 at Mt. Tabor Baptist Church. The mural was designed by Professor Ann Northrup, coordinator of Foundation Design in the School of Textiles and Materials Technology.

The mural, covering one wall of the Church, is a colorful collage depicting residents talking and playing, characteristic houses and stores lining Germantown Avenue, and the historical trolley car that rides up and down the avenue. The scene appears as viewed through a gothic church window, matching the architectural design of Mt. Tabor Church.

Under the guidance of Ms. Northrup, senior citizens in the intergeneration program of Center in the Park and students at Germantown High School painted the mural on panels of parachute cloth, which were then installed on the Mt. Tabor Church wall.

The mural is designed to highlight the varied, multigenerational life in the Germantown community. "At the pinnacle of the mural is a rose window featuring a multi-racial family – the circle looks like a sun spreading light over the whole scene," Ms. Northrup said in describing her mural design.

The project was funded with a grant from the Pennsylvania Department of Aging, and administered by the Philadelphia Recreation Department. The Mt. Tabor Baptist Church is located at 100 West Rittenhouse Street in Germantown.

## **Design Center/Target Host Girl Scouts for Design Workshop**

Girl Scouts of Southeastern Pennsylvania experienced the world of design during a series of workshops sponsored by Target Corporation.



Members of Roxborough's Troop 129 enthusiastically display the pieces they created while visiting The Design Center at Philadelphia University and its latest exhibition, *Playing the Field: the art + design of Godley-Schwan*.



The Philadelphia University Peer Health Educators sponsored information tables in the Ravenhill Dining Hall and the Common Thread on November 18 to support the Great American Smokeout and smoking cessation awareness on campus.



Students who stopped by the table manned by Kinjai Gandhi, a sophomore International Business major and member of the PhilaU Peer Health Educators and Kelli McClintick, assistant director of Student Development were offered Quit-Kits and information on quitting smoking and took the "Name That Chemical" challenge for prizes.



**Don't Miss  
Philadelphia University  
v. University of the Sciences**

**Saturday, November 27**  
1:30 p.m.  
The Palestra

Followed by the St. Joseph's/Davidson (men) game at 4 p.m. \$10 tickets will provide admission to both games. Email [athletics@PhilaU.edu](mailto:athletics@PhilaU.edu) for more information.

## **VOLUNTEERS NEEDED**

*Dining Services planning midnight breakfast for students.*

To mark the beginning of finals week, a Midnight Breakfast is being planned for December from 11:30 p.m. to 1:00 a.m. in the Ravenhill Dining Hall. Dining services is recruiting faculty and staff volunteers to help and show their support for the students as they burn the midnight oil to "make the grade."

If you are interested in volunteering your time, please call Ravenhill Dining Hall at x2924 and ask for Bill, Grace or Hanna. The breakfast will be available to the entire University community.

## **PLAYER OF THE WEEK**

***Week of November 15***



**Brent Welton**

Men's Basketball

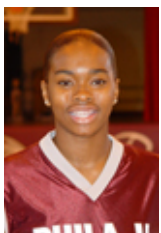
Senior, Guard/Forward

Philadelphia, Pa.

Roman Catholic High School

Brent Welton poured in a team-high 20 points, including four, three-point field goals, in the Rams 71-60 exhibition loss at Villanova University on November 14. Welton, a pre-season All-America selection, also collected four rebounds in 40 minutes of action against the Wildcats.

***Week of November 22***



**Samara Speakes**

Women's Basketball

Senior, Forward

Philadelphia, Pa.

Bodine High School

Samara Speakes poured in a season-high 34 points to lead the Lady Rams to their first victory of the season, a 92-68 win at home over Goldey-Beacom College on November 21. She hit on 12 of 19 field-goal attempts while also collecting eight rebounds. Through five games this season, Speakes is averaging a team-high 25.0 ppg, including a team-high 13, three-point field goals, to go along with 5.8 rpg.

#### IN THE NEWS

**Philadelphia University student, Adam Johnson and Industrial Design Professor Josh Owen** were featured in an article in the November 19 edition of *The Philadelphia Inquirer* about the Collab Design Competition. Johnson shared first place with a student from University of the Arts.

**Fernando Tovia, Ph.D., director of the new Industrial and Systems Engineering Program**, was featured in the November 18 edition of *The Chestnut Hill Local* for his appointment to the University.

**The Design Center at Philadelphia University** was featured in the November 18 edition of *The Chestnut Hill Local* in a photo caption about its recent workshop held for local youths.

#### SAVE THE DATE

## Second Annual International Games Festival

Wednesday, December 1

3 to 5 p.m.

Downs Hall Auditorium

The Foreign Language Department sponsors this annual event featuring games and creative activities from France, Japan, Germany, Italy and South America. All are invited to attend, have some fun and win prizes. Contact the Language and Cultural Center at x6813 for more information.

## Philadelphia University's Annual Holiday Party

Wednesday, December 22

3 to 6 p.m.

Germantown Cricket Club

Philadelphia, PA

RSVP to x2971 or [SpecialEvents@PhilaU.edu](mailto:SpecialEvents@PhilaU.edu) by December 15.

## Philadelphia University presents

### *The Vagina Monologues.*

February 11 and 12

*The Vagina Monologues* is based on real women's stories and is used as a centerpiece for V-Day, a global movement to stop violence against women and girls, which serves as a catalyst to promote creative events to increase awareness, raise support and revitalize the spirit of anti-violence organizations. To find out more about *the Vagina Monologues*, visit <http://www.vday.org/main.html>.

## Philadelphia University Wish List Drive

December 4

**9 a.m. to 3 p.m.**

Help the students, staff and faculty who are involved in the 2005 production of *The Vagina Monologues* kick off their fundraising effort to benefit Women Against Abuse, a Philadelphia non-profit organization that provides shelter and other direct services for survivors of abuse. For more information, contact Diana Janson at [janson2@PhilaU.edu](mailto:janson2@PhilaU.edu)

## **Join Us in Rome!**

*Alumni, staff, faculty, family and friends to visit The Eternal City.*



[Click here to view brochure](#)

### **April 9 through April 15, 2005**

The trip of a lifetime awaits you when our group travels to Rome for an unparalleled experience. See architectural wonders of the ancient world, view art of the masters, and step into the realm of the sacred -- all while enjoying the convenience of a top-rated hotel, fine dining, all transportation, and the camaraderie of friends of the University.

This all-inclusive journey, fully escorted and led by Dr. James Callaghan of the University's Study Abroad Program. A highlight of the trip is a visit to the American Academy to meet with Philadelphia University Architecture and Fashion Merchandising students studying in Rome, where the students will display their work.

To book your tour:

Call Karoline Olcott at AESU-Worldwide at 1.800.638.7640 or

email her at [res@aesu.com](mailto:res@aesu.com) or call Lisbeth Willis, director, Alumni Relations at 215.951.2929, or email her at [alumni@PhilaU.edu](mailto:alumni@PhilaU.edu)

*Please remember to book early as space is limited.*

*To tell us about news or events to be included in This Week@PhilaU, email [SpitaleE@PhilaU.edu](mailto:SpitaleE@PhilaU.edu) by noon on Fridays.*

---