

# This Week @ PhilaU

A Weekly Newsletter for Faculty, Staff and Students

## NEWS BRIEFS

### Master Italian Marquetry and Furniture Craftsman Visits Philadelphia University

Maestro Antonio Mugnari, from Citta' della Pieve, a walled, medieval town on the border of Umbria and Tuscany, Italy, gave a two day seminar on intarsio, 18th century Italian woodwork on November 2 and 3. Maestro Mugnari spoke about the history of inlaid Italian woodwork and taught the principles of Italian intarsio to Architecture students.

Professor David Breiner worked with Karen Saillant Bygott, a native Philadelphian and artistic director of The Philadelphia International Opera Theater to bring Maestro Mugnari to Philadelphia. The opera's singers premiered an Italian opera in Maestro Mugnari's hometown and had the opportunity to see him at work. In the same way as a master craftsman of 200 years ago, he uses the traditional materials and techniques handed down from the Renaissance to create unique versions of the great 18th-century styles of furniture, from Louis XIV to Sheraton. The youngest in a family of carpenters, he began working in wood at age 6. By the time he was 16, he was teaching at a professional craftsman school near his hometown. Now, 65 years later, Maestro Mugnari has begun traveling outside of Italy, transporting small reproductions of his large pieces in miniature. These pieces will briefly be exhibited at The Woodturning Center at 501 Vine Street.



Above: Visiting artisan Antonio Mugnari (far left) treats architecture students and professors to an interactive demonstration of his skills and exceptional techniques. Below: Maestro Mugnari also had exquisitely crafted examples of his work on display, including a tiny replica of Napoleon's desk.

## CAMPUS PLAN UPDATE

Check this column each week for the latest news on Philadelphia University's Campus Plan. Check our progress and any relocation plans as we get ready for the new construction. We're on the move!

**Following is a list of the those University services that have moved to new temporary locations:**

#### Campus Store

Hayward Hall, Room 001

#### Art Center I

Hayward Hall, Room 002

#### Mailroom

Hayward Hall, Room 030

#### Counseling Services

Student Center, Rooms 304, 306, 307, 308

#### Career Services

Hayward Hall, Room 126

#### Study Abroad

Hayward Hall, Room 128

#### Co-op

Hayward Hall, Room 128

#### Disability Services

Hayward Hall, Room 130

#### Academic Achievement Program/Act 101

Hayward Hall, Room 130

## EVENTS

### Monday, November 8

#### Yoga

5:30 to 6:30 p.m.

Downs Hall Room 3

Please bring a mat. Cost is \$10 per class. **Contact:** Lois Janney, x2727

#### Ramadan Break Fast

Sponsored by Spiritual Development

6 to 8 p.m.

Downs Hall Room 5

**Contact:** Lawrie Hurtt

#### Free Open Swimming

All faculty, staff and students are welcomed.

7:30 to 9:30 p.m., Monday and Wednesday evenings

Penn Charter High School

A lifeguard will be on duty.

**Contact:** Brad Koch, x2723



## EPA Student Exhibit Open

Philadelphia University Students' Designs featured in *Clothing From Waste Display*.



Philadelphia University Fashion Design Students' work is currently featured in an exhibition of clothing and accessories made from waste material at the U.S. EPA Philadelphia Public Information Center, 17th and Arch Streets, Philadelphia. The dress pictured above was made from soda can tabs. For more information, contact the Fashion Design department, x2785 for more information.

## Student Groups Treat Neighborhood Children

Philadelphia University's Student Government Association and Community Service Committee sponsored a Halloween Carnival for neighborhood children on October 29 in Downs Hall.

The Carnival, designed to delight schoolchildren from Kindergarten to 4th grade, featured face painting, haunted fishing, a mummification race and, of course, trick-or-treating. Children from the nearby communities of East

### Tuesday, November 9

#### FIA – Fashion Industry Association Meeting

11 a.m. to 1 p.m.

Hayward Hall Room 112

Meetings are held the second Tuesday of every month.

**Contact:** Andrea Garvey, Kelly Geib or Bear Smith, x2785

#### ACA Meeting

11:30 a.m.

Common Thread

Weekly meetings. Come and meet new people and join our upcoming events.

**Contact:** Tina Lau, lau2@philau.edu

#### Cornerstone Weekly Meeting

9 to 10:30 p.m.

Student Center Lounge

**Contact:** Ellen Nave, 215.843.3102

#### GLBT Late Coffee Night

10:30 to 11:30 p.m.

Ravenhill Mansion

The GLBT Student Alliance is hosting an informal meet and greet tonight. Refreshments will be served and all are welcomed to attend and get acquainted with the group and their role on campus.

**Contact:** Kevin J. Furst, FURST2@PhilaU.edu

### Wednesday, November 10

#### Career Services Center Sponsors *Reference USA Online Resource*

1 to 2 p.m.

Hayward Hall Suite 126

Pre-register on CareerLink to attend – space is limited.

**Contact:** Career Services Center, x2930

#### Lecture Series Sponsored by the School of Architecture and Design

Rand Elliott, FAIA, Architect

Elliott + Associates Architects

Oklahoma City, Oklahoma, "Recent Work"

6:30 p.m.

The Tuttleman Center Auditorium

**Contact:** Scott Ogburn, ogburns@PhilaU.edu, A&D Main Office x2896

#### Free Open Swim

All faculty, staff and students are welcomed.

7:30 to 9:30 p.m. every Monday and Wednesday

Evening at Penn Charter High School

A lifeguard will be on duty.

**Contact:** Brad Koch, x2723

#### Auditions for *The Vagina Monologues*

7 to 9 p.m.

Downs Hall Auditorium

**Contact:** Carol DiNovis, 1.717.330.9750

### Thursday, November 11

Falls, Roxborough and Manayunk came in costume to enjoy the free activities.



The SIA/Pre-med Society was voted number one activity booth by the children and attendees for their "Mad Scientist Lab."

## Omelet Bar Eggs-pands Menu Tuesday at The Common Thread



Sous Chef Mike Salomon (background, right) and Delphine Dunlap (foreground) of Dining Services prepare omelets made to order at The Common Thread on Tuesday, November 2.

## Claiborne VP Visits with Day MBA Students

### Graduate and Professional School Admissions Forum

Sponsored by Career Services Center  
10 a.m. to 3 p.m.

Temple University, Student Activity Center, 13th Street & Montgomery Avenue, Philadelphia  
Representatives from over 100 Graduate and Professional Programs will attend. Grad School Advice Consultants available as well as workshops including, "The ABC's of Personal Statements", "Entrance Exams: A Panel Discussion" and more.

For more information and to register to attend go to [www.sju.edu/services/careers/graduateforum](http://www.sju.edu/services/careers/graduateforum)

**Contact:** Career Services Center, x2930

### Math Review Sessions

11 a.m. to 1 p.m.

Downs Hall (call Contact for room number)

**Contact:** Melanie Boston, x6834

### Amnesty International Meeting

Noon

Ravenhill Mansion Room 13

A weekly meeting to discuss upcoming events and write letters.

**Contact:** Jessica Simpson, SIMPSON3@PhilaU.edu

### Friday, November 12

#### Friday Prayers (Jumah)

Sponsored by Minaret

Philadelphia University's Muslim Student Association

1 to 2 p.m.

Student Center Lounge

Open to the entire campus community.

You can email Minaret at [Minaret786@hotmail.com](mailto:Minaret786@hotmail.com) or

**Contact:** Bilal Abdul-Hakim, x0425 or Murad Oomer 215.869.3057

#### Asian Cultural Association Movie Night

6 to 10 p.m.

The Tuttleman Center Auditorium

Presenting: *Hero*

Refreshments will be served.

**Contact:** Tina Lau, 856.889.4967

### Saturday, November 13

#### Admissions Open House

9 a.m. to 2 p.m.

Campus wide – All Buildings

**Contact:** Jill Frick, x5336

#### Men's Soccer vs. Adelphi University

Noon

Ravenhill Soccer Field

**Contact:** Athletics, x2720

### Sunday, November 14

#### Melodies of Praise Choir Rehearsal

9 to 10:30 p.m.

Paul J. Gutman Library, Media Classroom

**Contact:** Nya Jacobs, x0257



Gary Ross, Philadelphia University alumnus and vice president of Global Sourcing and Quality for Liz Claiborne, Inc. (pictured with Mary Sheila McDonald, director of Graduate Business Programs) was the guest speaker at the Leadership Luncheon Series for Day MBAs on November 4.

## Blood Drive Tuesday



November 9  
Downs Auditorium  
9 a.m. to 2 p.m.

**American Red Cross**  
Penn-Jersey Region

To schedule an appointment log onto [https://www.membersforlife.org/pennj/schedule/bdc\\_schools.php](https://www.membersforlife.org/pennj/schedule/bdc_schools.php)  
(Click on Philadelphia University on November 9th!)  
Sponsored by Sigma Nu Fraternity

## OPEN AUDITIONS for all University Women

Participate in Philadelphia University's production of *the Vagina Monologues*.

### Wednesday, November 10

7 p.m.  
Downs Hall Auditorium

### Thursday, November 11

6 p.m.  
Tuttleman Auditorium  
Please come prepared to read a monologue from the script.  
Scripts are on reserve at the library. Contact Carol Di Novis with any questions at [Dinovis2@PhilauU.edu](mailto:Dinovis2@PhilauU.edu).

## Graduate and Professional School Fair Thursday

Thursday, November 11

10 a.m. to 3 p.m.

### Temple University Student Center

Philadelphia University has joined forces with more than 100 area colleges and universities to form The Graduate and Professional School Consortium and introduce students to opportunities for advanced study. The group is hosting the first annual Graduate and Professional Fair this week to help students interested in attending graduate or professional school find information on student loans, financial aid and graduate assistantships as well as workshops and information on the application process and entrance exams. To preregister and view a list of participating schools, visit <http://www.sju.edu/services/careers/graduateforum/index.htm>. For more information, contact Career Services at x2930.



## Join Us in Rome!

*Alumni, staff, faculty, family and friends to visit The Eternal City.*



[Click here to view brochure](#)

### **April 9 through April 15, 2005**

The trip of a lifetime awaits you when our group travels to Rome for an unparalleled experience. See architectural wonders of the ancient world, view art of the masters, and step into the realm of the sacred -- all while enjoying the convenience of a top-rated hotel, fine dining, all transportation, and the camaraderie of friends of the University.

This all-inclusive journey, fully escorted and led by Dr. James Callaghan of the University's Study Abroad Program. A highlight of the trip is a visit to the American Academy to meet with Philadelphia University Architecture and Fashion Merchandising students studying in Rome, where the students will display their work.

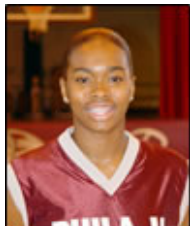
To book your tour:

Call Karoline Olcott at AESU-Worldwide at 1.800.638.7640 or

email her at [res@aesu.com](mailto:res@aesu.com) or call Lisbeth Willis, director, Alumni Relations at 215.951.2929, or email her at [alumni@PhilaU.edu](mailto:alumni@PhilaU.edu)

*Please remember to book early as space is limited.*

## PLAYER OF THE WEEK



### **Samara Speakes**

Women's Basketball  
Senior, Forward  
Philadelphia, Pa  
Bodine High School

Samara Speakes earned All-Tournament honors at the 2004 Disney Tip-Off Classic after averaging 23.7 ppg and 5.3 rpg in three contests. She opened the season with a game-high 23 points in a loss to the University of Wisconsin-Parkside. Speakes also poured in a game-high 32 points in the Lady Rams' next outing, a loss to the University of South Carolina-Aiken in the second round.

*To tell us about news or events to be included in This Week@PhilaU, email [SpitaleE@PhilaU.edu](mailto:SpitaleE@PhilaU.edu) by noon on Fridays.*

---