

# This Week @ PhilaU

A Weekly Newsletter for Faculty, Staff and Students

## NEWS BRIEFS

### First-Year Experience Students Shine

Winners of 2004 Summer Project Competition My Community, My Perspective announced.



As part of the 2004 First Year Experience Program, Finding Philadelphia, new Philadelphia University students participated in a summer project entitled, *My Community, My Perspective*.

Congratulations to our first year students who were honored for their work in the following categories:

#### Murals

- 1<sup>st</sup> Place  
Mallory Condrath
- 2<sup>nd</sup> Place  
Christopher Police
- 3<sup>rd</sup> Place  
Michelle Guan
- Honorable Mention  
Raquel DeCastro

#### Essays

- 1<sup>st</sup> Place  
Zachary Magere
- 2<sup>nd</sup> Place  
Chad Reis
- 3<sup>rd</sup> Place  
Tibarek Ejamo
- Honorable Mention  
Henry Buchholz  
[download PDF]
- Honorable Mention  
John Costello  
[download PDF]



## CAMPUS PLAN UPDATE

Check this column each week for the latest news on Philadelphia University's Campus Plan. Check our progress and any relocation plans as we get ready for the new construction. We're on the move!

Following is a list of the those University services that have moved to new temporary locations:

#### Campus Store

Hayward Hall, Room 001

#### Art Center I

Hayward Hall, Room 002

#### Mailroom

Hayward Hall, Room 030

#### Counseling Services

Student Center, Rooms 304, 306, 307, 308

#### Career Services

Hayward Hall, Room 126

#### Study Abroad

Hayward Hall, Room 128

#### Co-op

Hayward Hall, Room 128

#### Disability Services

Hayward Hall, Room 130

#### Academic Achievement Program/Act 101

Hayward Hall, Room 130

## EVENTS

### Monday, October 18

#### Ghoul Gram Sale/Fundraiser

9 a.m. to 1 p.m.

The Common Thread

Delta Phi Epsilon will be holding fundraisers this week by selling Ghoul Grams. Send your friends a Halloween message and candy! There will also be a candy corn jar and the person who guesses the correct amount of candy corn (or comes closest) wins a CASH prize! Proceeds benefit ANAD – an Anorexia Nervosa charity.

Contact: Kassie Ludwig, LUDWIG2@PhilaU.edu

#### Exhibition Tour

**Playing the Field: The art & design of Godley-Schwan** with Lyn Godley, Professor, Product Design, Parsons School of Design.

2:30 to 4 p.m.

The Design Center

A gallery tour for all interested students, faculty and staff

For more information go to [www.PhilaU.edu/](http://www.PhilaU.edu/)

## Collages

### 1<sup>st</sup> Place

Michel Saewert

### 2<sup>nd</sup> Place

Aynsley Kearns

### 3<sup>rd</sup> Place

Jess Gardner

### Honorable Mention

Valerie Cazeau

## Poems

### 1<sup>st</sup> Place

Kuw Xiong

[download PDF]

### 2<sup>nd</sup> Place

Joanne Hohenwarter

[download PDF]

### 3<sup>rd</sup> Place

Andrew Kollar

### Honorable Mention

David Ciuper

[download PDF]

### Honorable Mention

Lydia Scott

### "People's Choice Award"

Christopher Police – Mural

Finalist



For more, visit [www.philaU.edu/StudentDev/SummerProjectWinnersReception.htm](http://www.philaU.edu/StudentDev/SummerProjectWinnersReception.htm) for more. All winning entries are currently on display on the second floor of the Paul J. Gutman Library.



## Gallery Tour of

### Playing the Field: the art + design of Godley-Schwan Monday

Contact Hilary Jay at [JayH@PhilaU.edu](mailto:JayH@PhilaU.edu). For more information, visit [www.PhilaU.edu/designcenter/Godley-Schwan](http://www.PhilaU.edu/designcenter/Godley-Schwan).

These exhibition tours are funded by a generous grant from the Target Corporation.

## Vote Smart Panel Discussion Tuesday

Tuesday, October 19

7 p.m.

Tuttleman Auditorium

### ***Iraq and Beyond: Understanding American Foreign Policy***

Panel Discussion of the international issues not discussed during the Presidential debates. Panelists include, Michael Hagen, professor of Political Science, Temple University; Geoffrey Herrera, assistant professor of Political Science; Anne Norton, professor of Political Science, University of Pennsylvania; Sanford Schram, visiting professor, Bryn Mawr, School of Social Work and Social Research; moderated by Rick Shain, associate professor, History/Area Studies, Philadelphia University

Sponsored by the Office of Academic Affairs and the School of General Studies. Call x2705 for more information.

## "Little Rock Nine" Jefferson Thomas to Speak on Campus Wednesday

Wednesday, October 20

designcenter/Godley-Schwan

Contact: [RSVP\\_designcenter@PhilaU.edu](mailto:RSVP_designcenter@PhilaU.edu)

## Vagina Monologues Meeting

5 to 8 p.m.

Student Center Lounge

Contact: Kelli McClintick/Student Development Office x2856

## Yoga

5:30 to 6:30 p.m.

Downs Hall Room 3

Please bring a mat. Cost is \$10 per class.

Contact: Lois Janney, x2727

## Free Open Swimming

All faculty, staff and students are welcomed.

7:30 to 9:30 p.m., Monday and Wednesday evenings

Penn Charter High School

A lifeguard will be on duty.

Contact: Brad Koch, x2723

## Tuesday, October 19

### **Iraq and Beyond: Understanding American Foreign Policy**

A panel discussion of the international issues that aren't being discussed during the presidential debates.

7 p.m.

The Tuttleman Center Auditorium

Panelists include: Michael Hagen, Professor of Political Science, Temple University  
Geoffrey Herrera, Assistant Professor of Political Science

Anne Norton, Professor of Political Science, University of Pennsylvania

Sanford Schram, Visiting Professor, Bryn Mawr, School of Social Work and Social Research

Moderated by Rick Shain, Associate Professor, History/Area Studies, Philadelphia University

Contact: James Savoie, Assistant Dean of Academic Affairs, x2705

## Cornerstone Weekly Meeting

9 to 10:30 p.m.

Student Center Lounge

Contact: Ellen Nave, 215.843.3102

## Sex Education Information Session

9:30 to 11 p.m.

Ravenhill Mansion Main Floor

Contact: Michelle, x0410

## Wednesday, October 20

### **Ghoul Gram Sale/Fundraiser**

9 a.m. to 1 p.m.

The Common Thread

Delta Phi Epsilon will be holding fundraisers this week by selling Ghoul Grams. Send your friends a Halloween message and candy! There will also be a candy corn jar and the person who guesses the correct amount of candy corn (or comes closest) wins a CASH prize! Proceeds benefit ANAD – an Anorexia Nervosa charity.

Contact: Kassie Ludwig, [LUDWIG2@PhilaU.edu](mailto:LUDWIG2@PhilaU.edu)

## Reference USA Online Resources

1 to 2 p.m.

Hayward Hall, Suite 126

Pre-register on CareerLink to attend – space is limited.

Contact: Career Services Center, x2930

6 p.m.

Tuttleman Auditorium

A special presentation in recognition of the 50th Anniversary of Brown v. Board, the Supreme Court case that ended segregation in America's public schools  
Call x2735 for more information.

### School of Architecture and Design Fall 2004 Lecture Series

#### This Week

**Wednesday, October 20**

Thomas Kearns, AIA, Architect  
Shepley Bulfinch Richardson and Abbott  
Boston, MA

*Recent Work*

6:30 p.m.

Paul J. Gutman Library, Media Classroom



Contact Scott Ogburn at x2933 for more information.

For a complete schedule, visit [www.PhilaU.edu/schools/add/ugradmajors/architecture/exlects.htm](http://www.PhilaU.edu/schools/add/ugradmajors/architecture/exlects.htm)

#### Fall 2004 04 Film for Thought

All films will be shown at 6 p.m. in the Student Center Lounge

**Thursday, October 21**

*Fahrenheit 9/11*

**Wednesday, November 17**

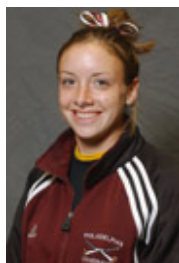
*Mona Lisa Smile*

Visit [www.PhilaU.edu/StudentDev/FilmForThought](http://www.PhilaU.edu/StudentDev/FilmForThought). for more information.

#### Please Note

The Flu Shot Clinic planned for Thursday has been cancelled until further notice. You will be notified by email with updated information. Contact Health Services at x2986 for more information.

## PLAYER OF THE WEEK



#### Brooke Woodland

Field Hockey  
Freshman, Forward  
West Grove, Pa.  
Avon Grove High School

Brooke Woodland registered three goals in three games for the Lady Rams last week. She tallied a goal in 4-2 loss at Delaware Valley College on October 11 and also registered a pair of goals in the Lady Rams' 3-2 win over Catawba (N.C.) College on October 16, giving her a team-high nine goals for the season.

## NEW ON THE WEB



Counseling Services now offers an anonymous, Internet-based resource to provide students with a non-threatening and supportive link to numerous mental health services. Visit [www.philau.edu/counseling](http://www.philau.edu/counseling) and click on the Ulifeline.org link for more information.

#### Brown vs. The Board of Education

In memory of the 50th Anniversary of the court case that ended segregation in America's public schools, a group of Philadelphia University faculty and staff have planned a campus visit by one of the "Little Rock Nine", Mr. Jefferson Thomas.

6 p.m.

The Tuttleman Center Auditorium

Sponsored by the Academic Achievement Center

Contact: Judith Carter, x2735

#### Architecture Lecture Series

6:30 p.m.

Gutman Library Media Classroom

Thomas Kearns, AIA, Architect

Shepley Bullfinch Richardson and Abbott

Boston, Massachusetts

"Recent Work"

Contact: Professor Scott Ogburn, x2896

#### Free Open Swimming

All faculty, staff and students are welcomed.

7:30 to 9:30 p.m., every Monday and

Wednesday evening

Penn Charter High School

A lifeguard will be on duty.

### Thursday, October 21

#### Ghoul Gram Sale/Fundraiser

9 a.m. to 1 p.m.

The Common Thread

Delta Phi Epsilon will be holding fundraisers this week by selling Ghoulish Grams. Send your friends a Halloween message and candy! There will also be a candy corn jar and the person who guesses the correct amount of candy corn in the jar (or comes closest) wins a CASH prize! Proceeds benefit ANAD – an Anorexia Nervosa charity.

Contact: Kassie Ludwig, LUDWIG2@PhilaU.edu

#### Interview Like a Pro Workshop

11 a.m. to 12:15 p.m.

Hayward Hall, Suite 126

Contact: Career Services Center, x2930

#### Career Spotlight: Mother's Work, Inc

Visual Manager and a Human Resources Professional

11 a.m. to 12:30 p.m.

The Tuttleman Center Auditorium

All students invited to attend.

Contact: Career Services Center, x2930

#### Math Review Sessions

11 to 1 p.m.

Downs Hall, first floor

Contact: Melanie Boston, x6834 (Learning and Advising Center)

#### Black Student Union Meeting

11 a.m. to Noon

Downs Hall Room 1

All are invited.

Contact: LaNier Holmes, 267.286.6663 or 443.527.7200

#### Library Training Program

11 a.m. to Noon

## IN THE NEWS

**David Brookstein, dean of the School of Textiles and Materials Technology**, was featured in the November issue of *Textile World Magazine* for the establishment of the Laboratory for Engineered and Human Protection.

## HATS OFF!

**The American Chemical Society (ACS) Student Affiliates (SA) chapter at Philadelphia University** has been selected to receive an Honorable Mention award for its activities during the 2003-04 academic year. **Professor Jeff Ashley** is the faculty advisor for the chapter.

The designs of **Fashion Design students, Jaclyn Kelly, Kathryn Taylor, Ryann Hyde, Sat Darshan Khalsa, Staci Jacob and Andrew Glenesk**, were chosen to be part of the *EPA Exhibit Clothing from Waste*, which will during November and December at the U.S. EPA Philadelphia Public Information Center in Philadelphia.

## SAVE THE DATE



**Monday, October 25**

**8 p.m.**

**Paul J. Gutman Library**

**Media Classroom**

**"Prepare a Face"**

**a dramatic reading by**

**Christopher Michael Davis**

Local author and our own Director of Web

Communications

From his recently published collection of short stories:

*Little Knives: Twelve Tales of Horror and the Supernatural.*

**Presented by The Paul J. Gutman Library, Philadelphia University Writing Program, and Office of Student Activities**

*Free and open to the public. Refreshments will be served.*

**Wednesday, October 27**

**7 p.m.**

**Tuttelman Auditorium**

**TWO NATIONS?: Economics, Education, Employment, Equality, Etc.**

**A Panel Discussion Of the Domestic Issues Important to Young Voters**

Panelists include: Beth Bailey, Professor of History, Temple University; Graham Lee, Professor and Chairman of Political Science, St. Joseph's University; Randall Miller, Professor of History, St. Joseph's University; Mary Summers, Senior Fellow, Fox Leadership Program, Lecturer, Political Science, University of Pennsylvania  
Moderator: Marcella McCoy, Director, Honors Program, Philadelphia University

*For further information contact:*

*James A. Savoie, Assistant Dean of Academic Affairs at 215.951.2705*

**Friday, October 29**

**Downs Hall**

The Tuttleman Center Room 213  
SWOT Analysis: How to do the Research  
Students in B123 and other business courses are often required to perform a SWOT analysis. This involves extensive company and industry research with a focus on strengths, weaknesses, opportunities and threats. This session identifies research sources that are helpful in providing these types of information.

**Contact:** Steven Bell, x2847 or email bells@PhilaU.edu

### **Amnesty International Meeting**

Noon

Ravenhill Mansion Room 13

A weekly meeting to discuss upcoming events and write letters.

Contact: Jessica Simpson, SIMPSON3@PhilaU.edu

Volleyball vs. Concordia College

7:30 p.m.

Althouse Hall, Bucky Harris Gym

**Contact:** Athletics, x2720

### **Film for Thought**

**Fahrenheit 9/11**

6 p.m.

Student Center Lounge

Filmmaker Michael Moore's documentary about President Bush and his administration's response to the tragic events of 9/11/01.

*Fahrenheit 9/11* was winner of Best Picture at the 2004 Cannes Film Festival. Join us for pizza and a movie followed by a discussion facilitated by Professor Jenna Musket. All for free!

**Contact:** Student Development Office, x2634

## **Friday, October 22**

### **Textile/Apparel Industry Issues Lecture**

Noon to 1 p.m.

Gutman Library Media Classroom

Open to the entire campus community.

Global Imaging of US Contract Textiles "Hot Markets-Cool Profiles"

With Mary Lynn Landgraf, Office of Textiles and Apparel, Market Expansion Division, US Department of Commerce, <http://otexa.ita.doc.gov>

**Contact:** Professor Goutmann, x2754

### **Friday Prayers (Jumah)**

Sponsored by Minaret, Philadelphia University's Muslim Student Association

1 to 2 p.m.

Student Center Lounge

Open to the entire campus community.

You can email Minaret at

Minaret786@hotmail@hotmail.com

**Contact:** Bilal Abdul-Hakim, x0425 or Murad Oomer 215.869.3057

### **Volleyball vs. Kutztown University**

7:30 p.m.

Althouse Hall, Bucky Harris Gym

**Contact:** Athletics, x2720

### **Weekend Program "Stevie Starr"**

9 to 11 p.m.

Downs Auditorium

Contact: Tim Butler, x2744

