

PHILADELPHIA UNIVERSITY

FACULTY RESEARCH SURVEY

RESULTS

SPRING 2015

Background

- Understanding faculty needs for research and research advocate
- Supporting research culture within student-centric University mission

Discuss Faculty Research Survey Results

Research Highlights

Number of Faculty Responses	83
------------------------------------	-----------

Research Activity (past 3 years)

Did Research	92%
---------------------	------------

Did Research with Undergrads	23%
-------------------------------------	------------

Did Research with Grad students	16%
--	------------

Published Research (Academic or Practice)	76%
--	------------

Books	22
--------------	-----------

Peer Reviewed Journal Articles	39
---------------------------------------	-----------

Professional publications	10
----------------------------------	-----------

Research Highlights

GRANTS

Applied (Internal or External)	84%
Received PhilaU	31%
Received Govt.	11%
Received Private/Public	14%

Things that would help facilitate Research:

Summer Support	52%
Research Assistance	39%
Assistance in finding funding sources	37%
Assistance with grant writing	45%

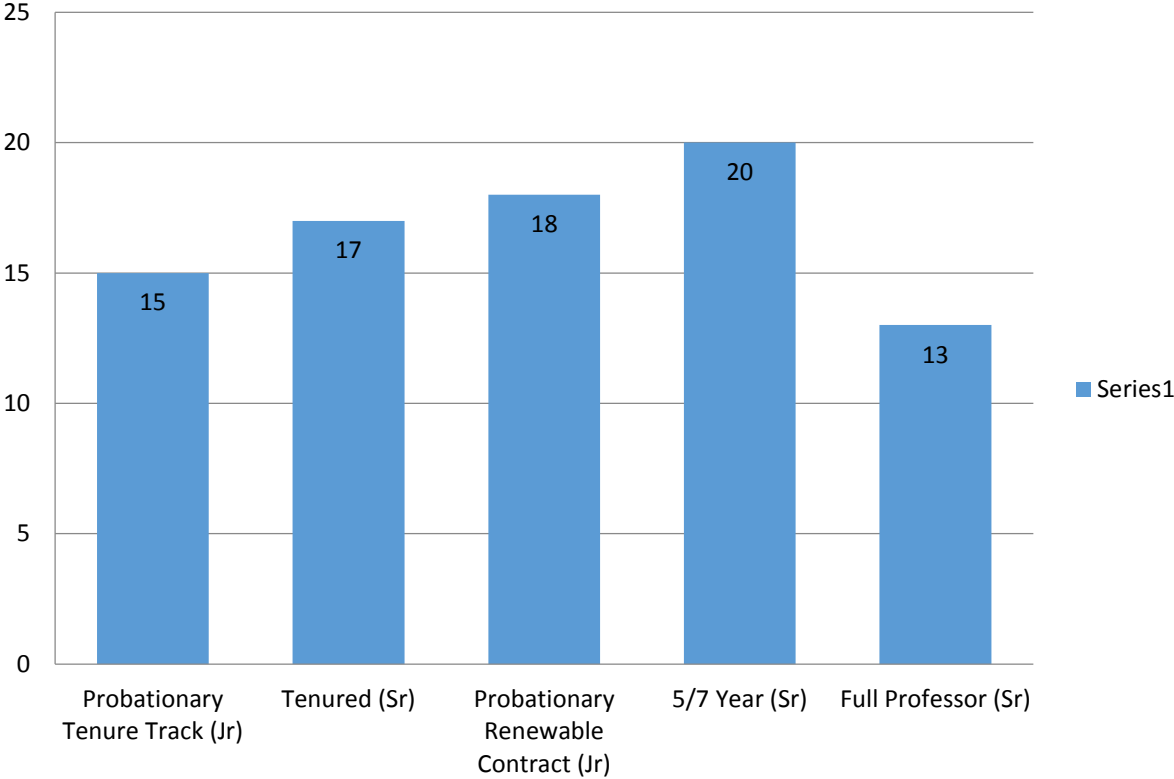
Top 3 impediments to doing research

Teaching/Service loads	
-------------------------------	--

Not enough resources	
-----------------------------	--

Lack of incentives	
---------------------------	--

Contract Type (Sample = 83)



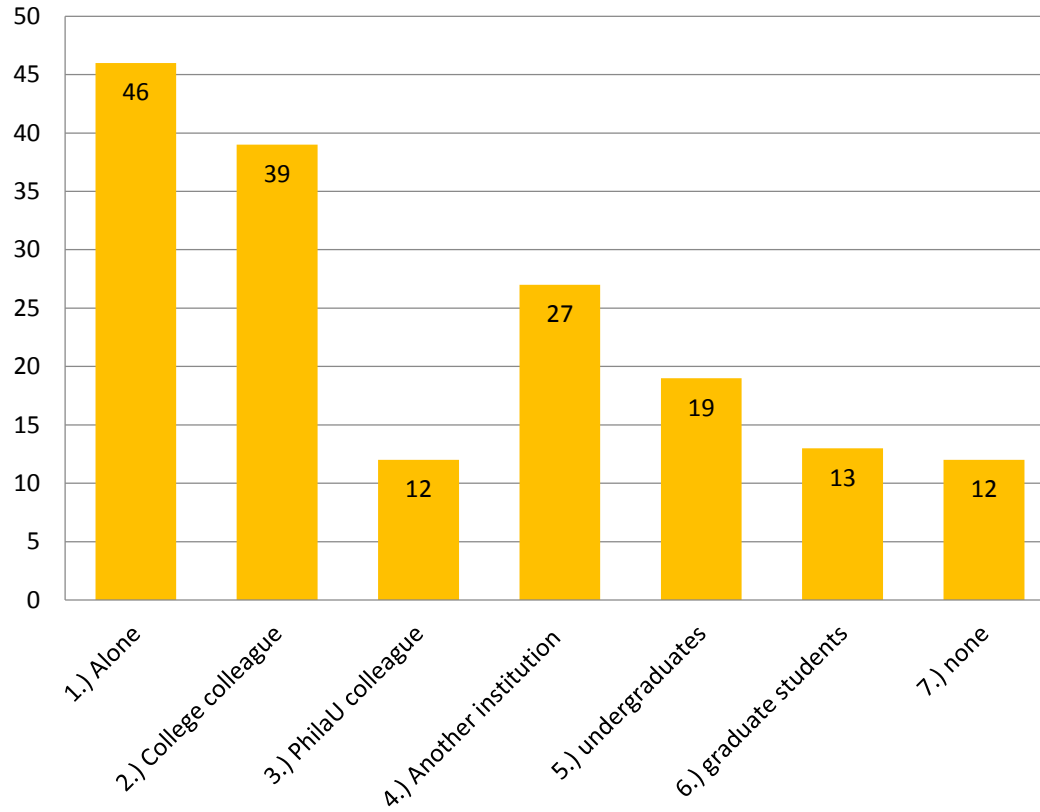
A.) Type of Contract
Probationary Tenure Track (Jr)
Probationary Renewable Contract (Jr)
Tenured (Sr)
5/7 Year (Sr)
Full Professor (Sr)

Contract Type (%)



A.) Type of Contract
Probationary Tenure Track (Jr)
Probationary Renewable Contract (Jr)
Tenured (Sr)
5/7 Year (Sr)
Full Professor (Sr)

I have carried out research with



B1.) I have carried out research within the last 3 years (ie, since 01/01/12)

1.) Alone

2.) With a colleague in my College

3.) With a colleague in another PhilaU College

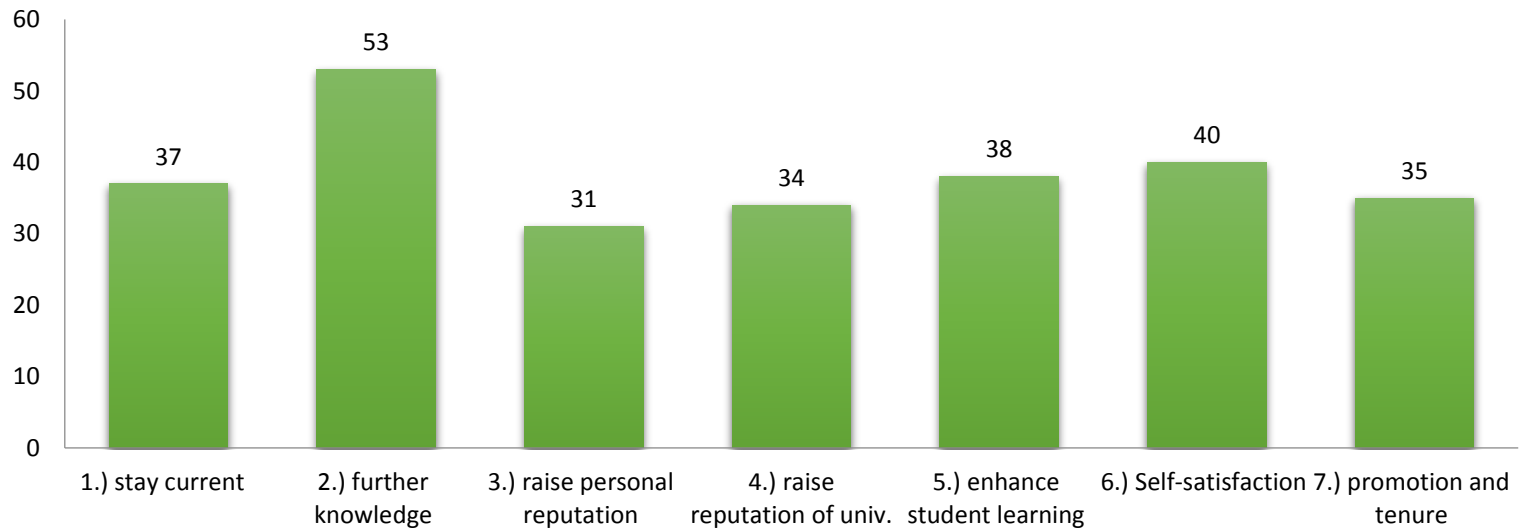
4.) With a colleague(s) at another institution

5.) With my undergraduates

6.) With my graduate students

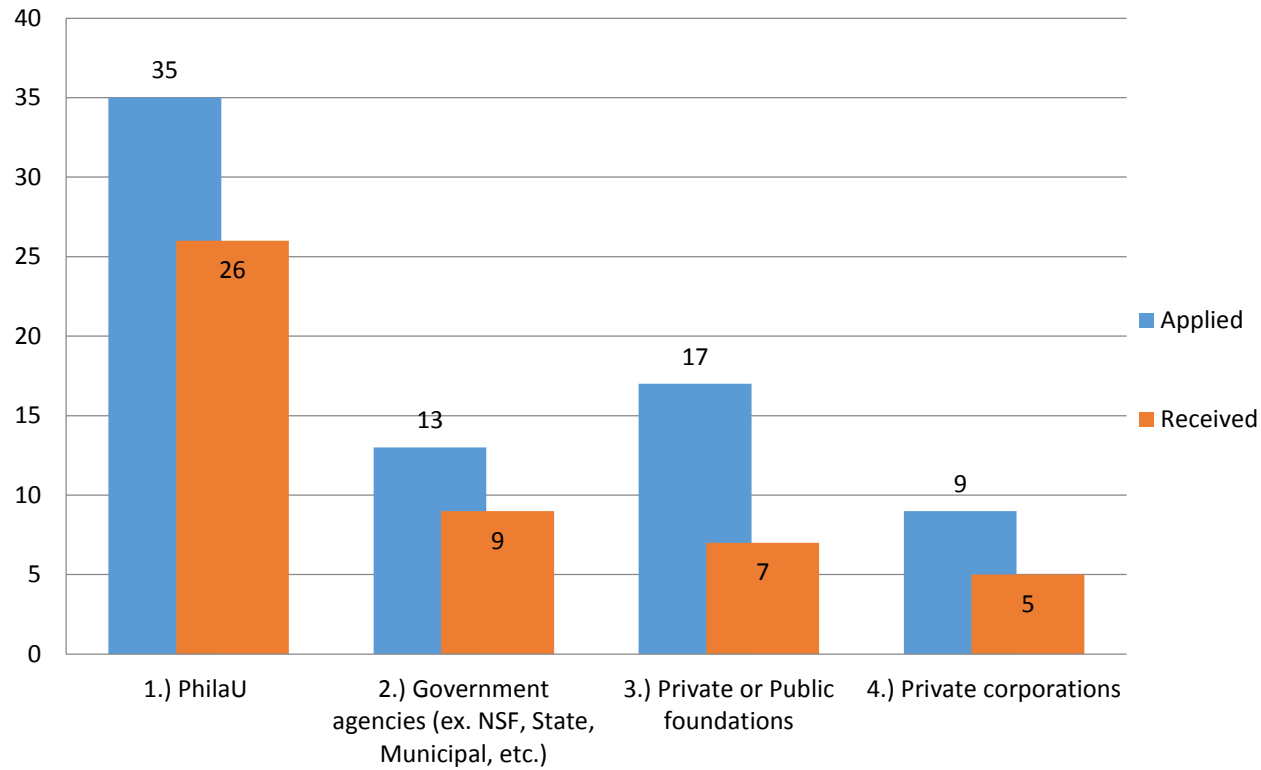
7.) I have not carried out research within the last 3 years

Primary Role of Research



B3.) What is primary role of research in your professional development?
1.) stay current
2.) further knowledge
3.) raise personal reputation
4.) raise reputation of univ.
5.) enhance student learning
6.) Self-satisfaction
7.) promotion and tenure

GRANTS



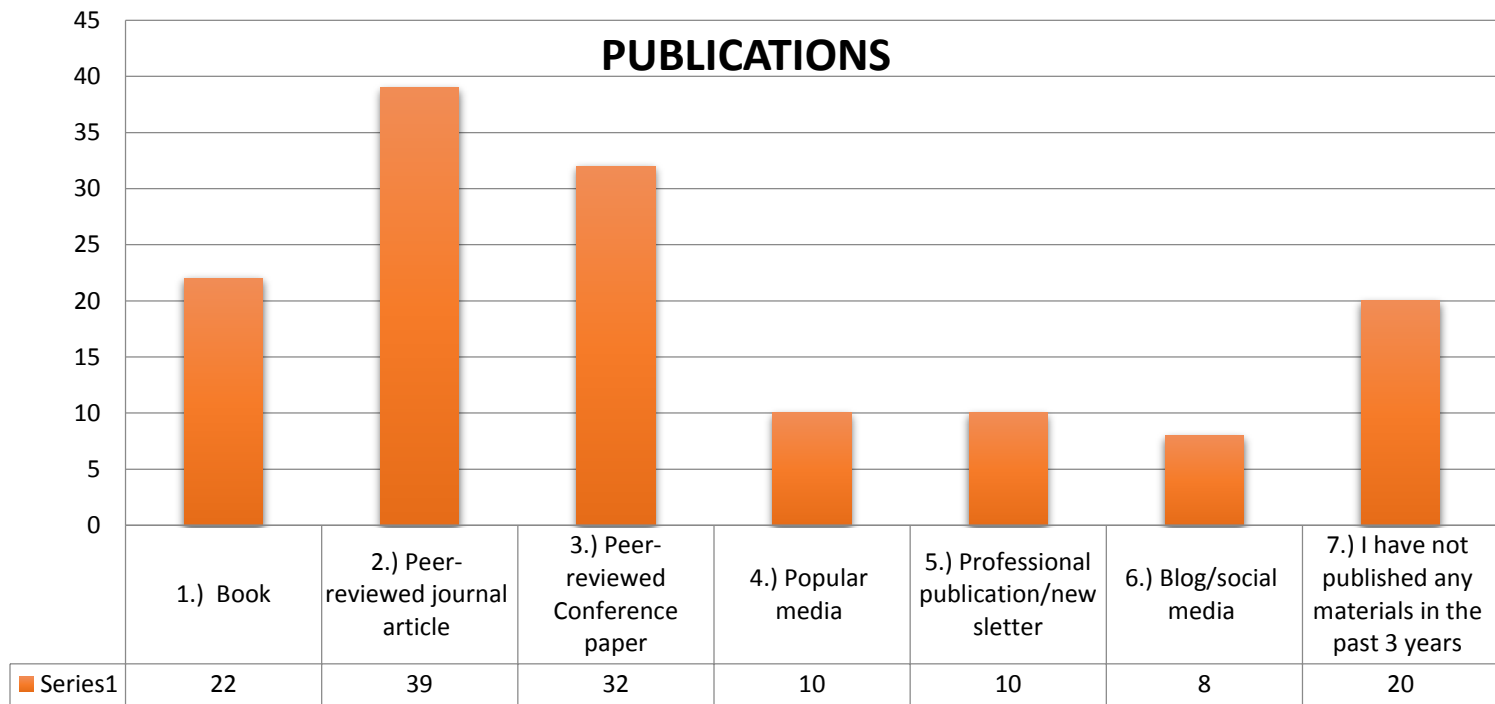
C1.) I have APPLIED/SUCCESSFULLY RECEIVED grants in the last 3 years from..

1.) PhilaU

2.) Government agencies (ex. NSF, State, Municipal, etc.)

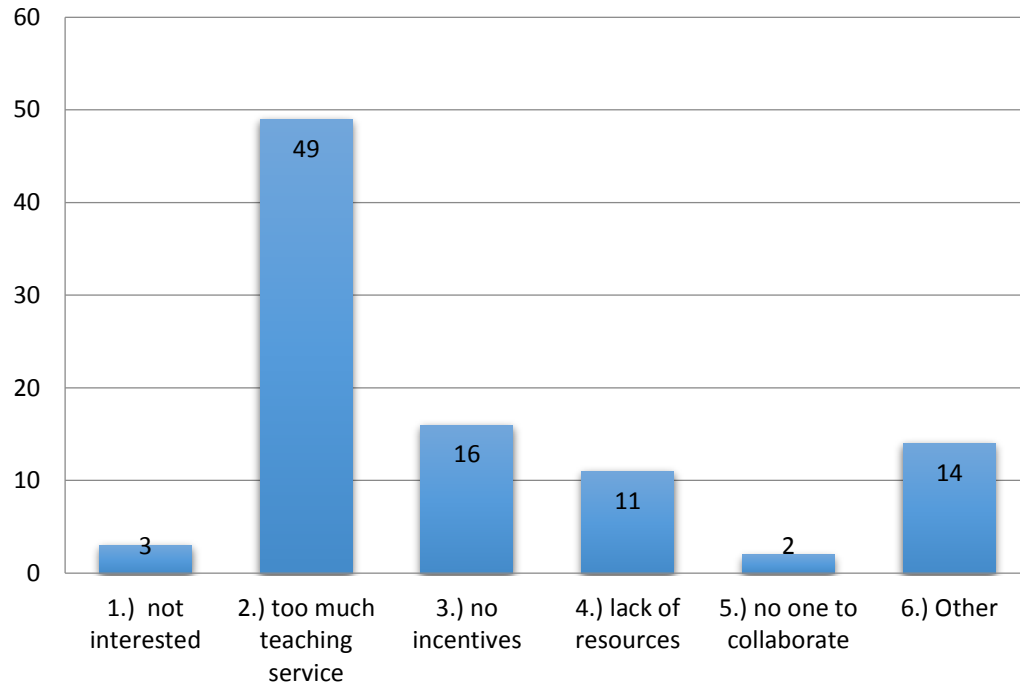
3.) Private or Public foundations

4.) Private corporations



E.) In the past 3 years, I have published my research finding or exhibited my practiced-based materials in the following
1.) Book
2.) Peer-reviewed journal article
3.) Peer-reviewed Conference paper
4.) Popular media
5.) Professional publication/newsletter
6.) Blog/social media
7.) I have not published any materials in the past 3 years

Could not do Research because



F1.) I have been unable to do much research in the past few years because:

1.) not interested

2.) too much teaching service

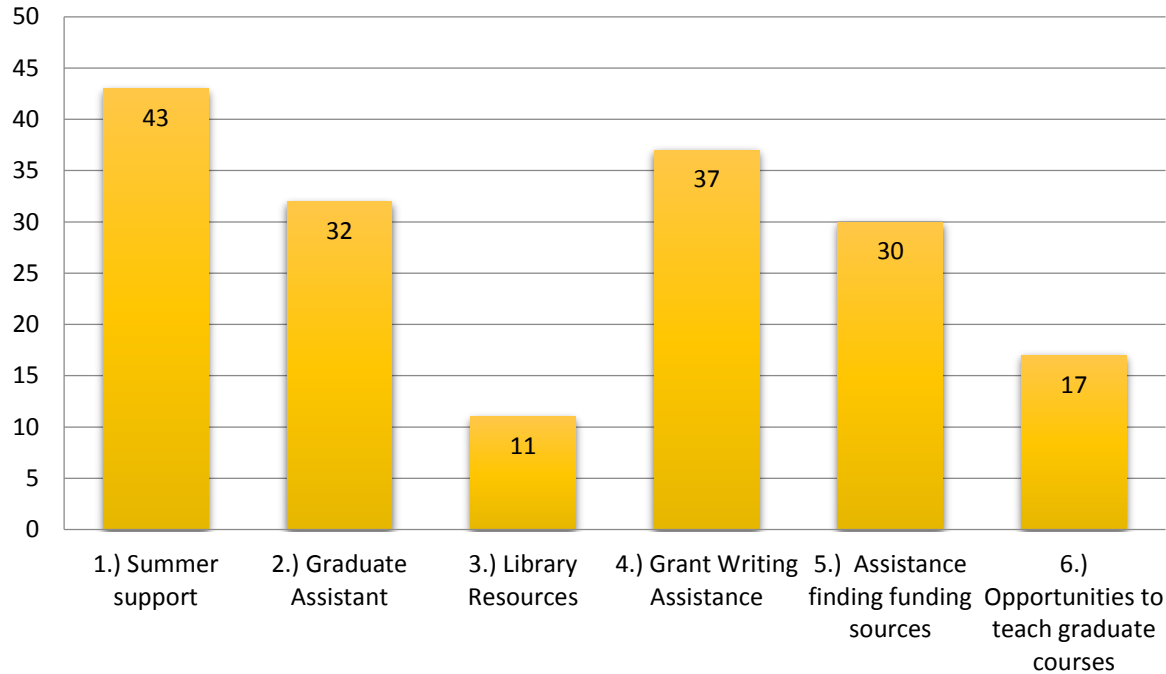
3.) no incentives

4.) lack of resources

5.) no one to collaborate

6.) Other

Kind of research support needed to encourage faculty research



F3.) What kind of research support would help faculty encourage research?

1.) Summer support

2.) Graduate Assistant

3.) Library Resources

4.) Grant Writing Assistance

5.) Assistance finding funding sources

6.) Opportunities to teach graduate courses

What research in each college?

- Research funding sources (public, private, consulting, etc.)
- Practice vs. Tenure
- Large scale vs. Small scale

• SBA

- Fashion; textile; health policy; computational intelligence;

• SDE

- Composites; textiles; personal fine art; innovatio process

• CSHLA

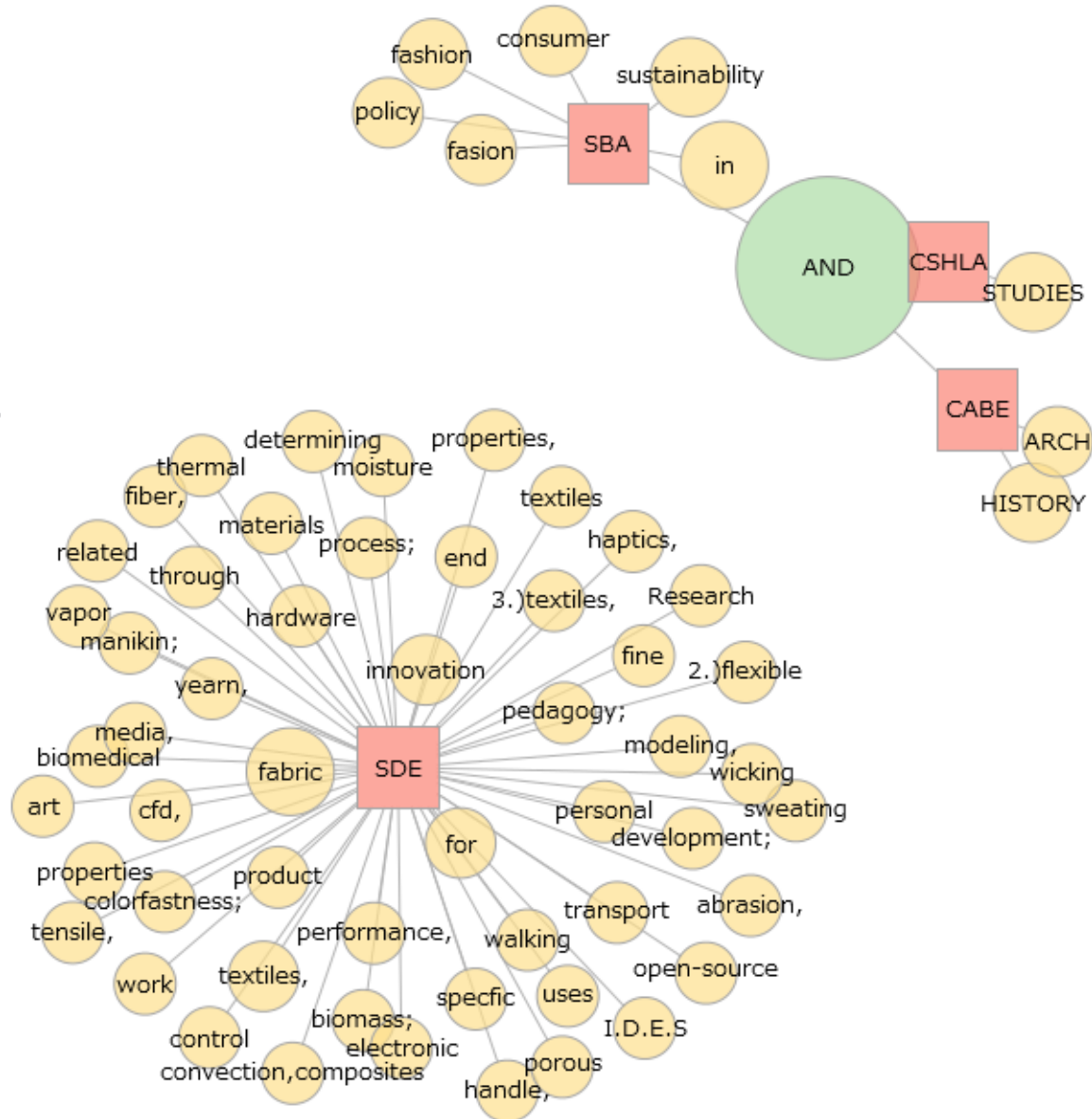
- Biology; chemistry; psychology; ecology; politics/law; hospital; mura art; globalization; ethics; literature

• CABA

- History; landscape; material; design process

• Common

- Pedagogy



CABE: Research Area/Topic

- **Pedagogy; sustainable education; online education**
 - **Pedagogy and Materiality**
 - **Pedagogy/Furniture Design/Student Design Process**
-
- **History of Philadelphia Architecture**
 - **Arch. History and Color**
-
- **landscape development**
 - **baroque gardens; vernacular gardens; older farming landscape**
 - **medieval and classical water systems;**
-
- **composites, building envelope**
 - **systems thinking and built environment**
-
- **Computational design methods**
-
- **Humanities based research**

SBA: Research Area/Topic

- **Pedagogy**

Marketing:

- consumer research/ luxury shopping ; consumer behavior /experiences
- Social media and marketing

Fashion:

- Global fashion
- Design and fashion management

Finance:

- Finance/ Financial accounting

Economics:

- International trade; Industry analysis: Textile and Apparel
- Health policy

Management:

- Sustainability; Technology and innovation and corporate sustainability

IS and Operations

- machine scheduling problems
- computational intelligence

SDE: Research Area/Topic

- **Pedagogy**
- **biomass; vapor transport through textiles**
- **flexible materials modeling, haptics, biomedical textiles, electronic textiles, industry studies, control systems**
- **textiles, fabric performance, fabric handle, thermal and moisture properties, walking sweating manikin;**
- **fabric tensile, abrasion, colorfastness; determining fiber, yarn, and fabric properties for specific end uses**
- **wicking in porous media, cfd, convection, composites**
- **Research for development of personal fine art related work**
- **innovation process; product development; open-source hardware I.D.E.S**

CSHLA: Research Area/Topic

- **PEDAGOGY OF WRITING, MEDIA STUDIES, RHETORIC OF SCIENCE, VISUAL writing program admin, pedagogy**
- **RHETORIC TEAM BASED LEARNING/ READINESS ASSESSMENT QUIZING**
- **SCIENCE PEDAGOGY, ECOLOGICAL MODELING**
- **TRAUMA- INFORMED EDU AND INFORMED CLASSROOMS**

LIBERAL ARTS

- **Political/Presidential Rhetoric**
- **International Political, Antitrust Laws, International Policies**
- **Conspiracy Theories**
- **History/Political History**
- **Culture Studies**
- **mural art, latinola studies and culture**
- **literature/film/fashion**
- **Emotion as affect**
- **media globalization**
- **Non-profit development**
- **ethics, political philosophy, philosophy of law**

CSHLA: Research Area/Topic

SCIENCE

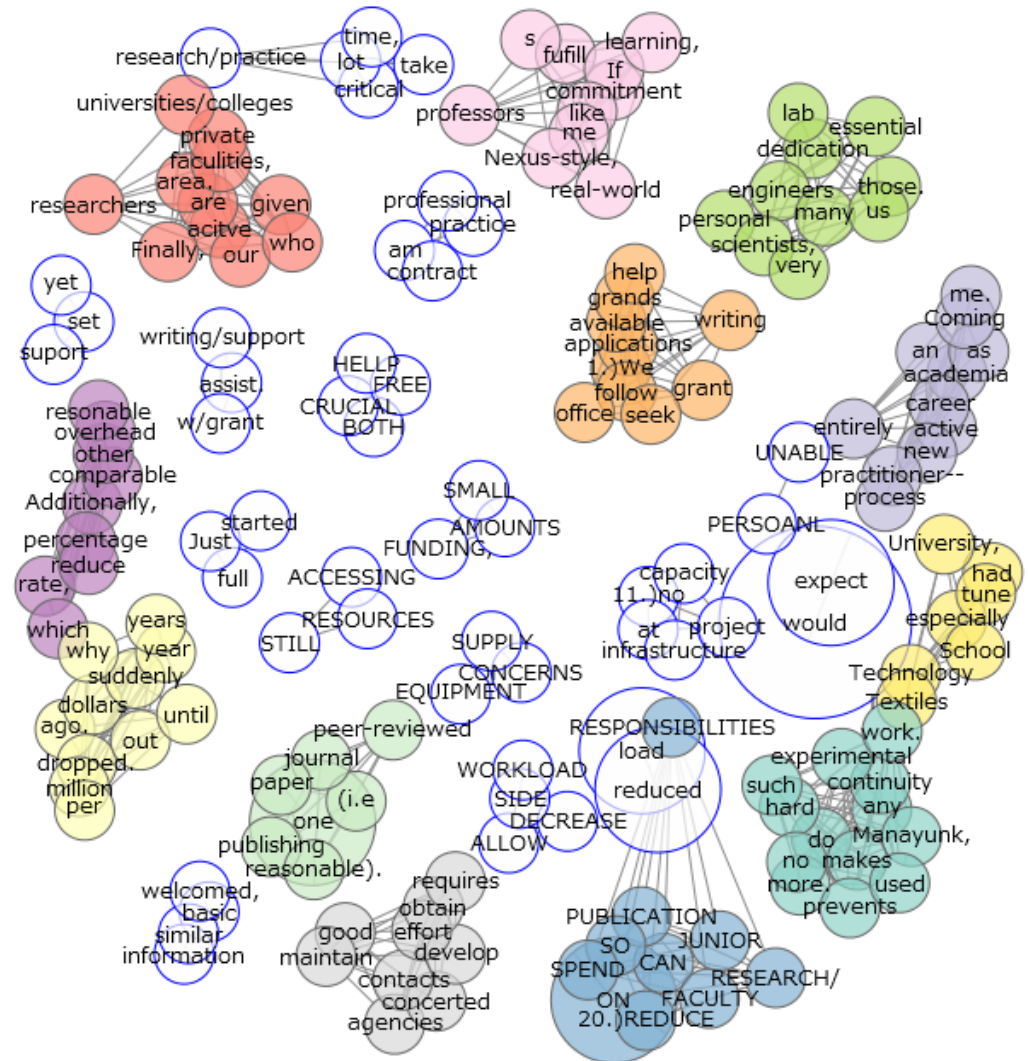
- environmental chemistry and toxicology
- SYNTHETIC ORGANIC, INORGANIC, AND ANALYTICAL CHEMISTRY flexible
- MAGNETIC RESONANCE SPECTROSCOPY
- COMPUTATIONAL CHEM
- BIOLOGY/BIOCHEM

HEALTH

- Reproductive Health
- Therapeutic Relationships, Inter Professional Practice
- Hospital accreditation, educational pedagogy, volunteers policies
- TRAUMA- INFORMED EDU AND INFORMED CLASSROOMS

Challenges

- Common comments
 - Lack of admin/grant writing/support
 - Workload(teaching/service)

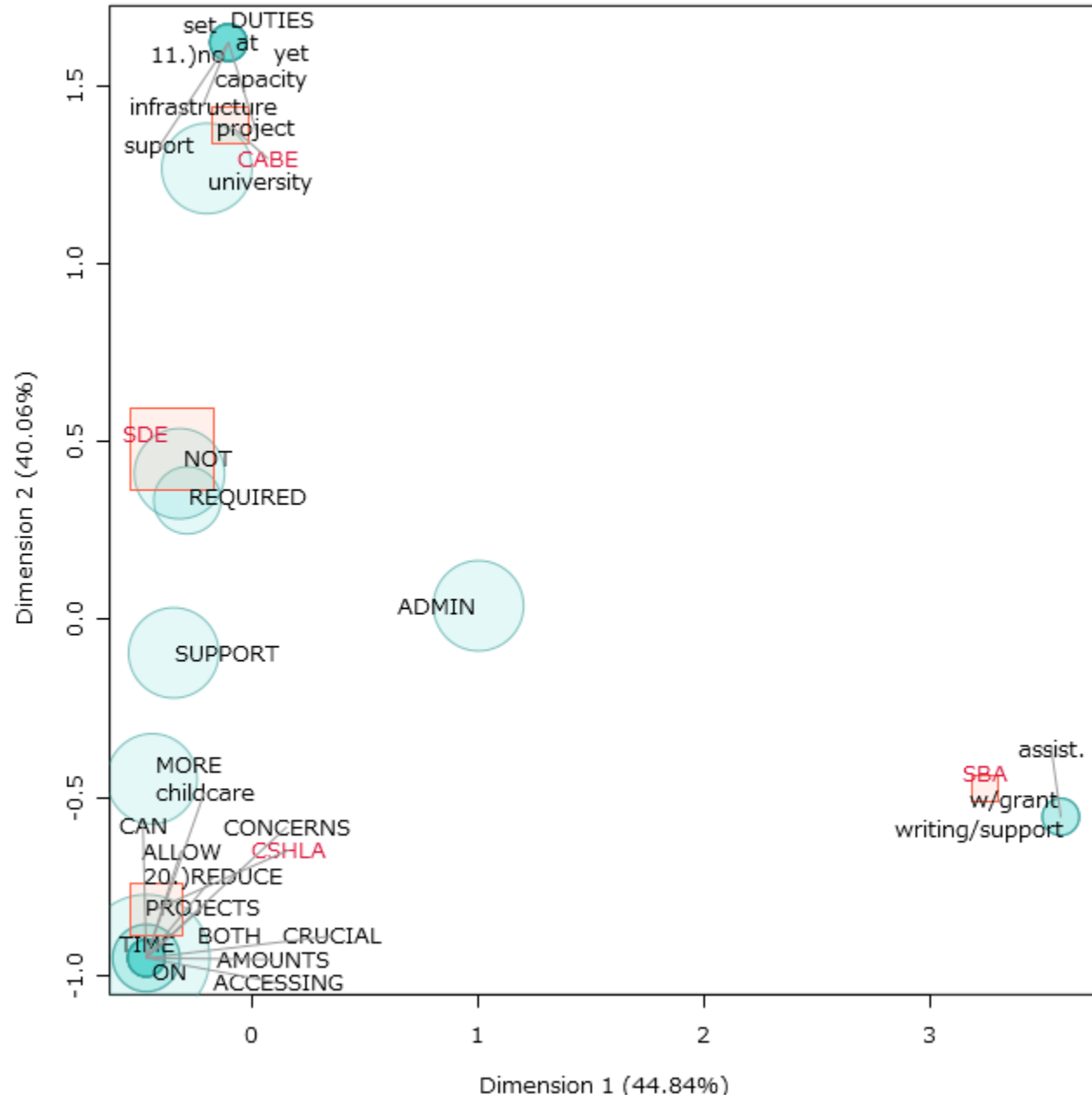


Faculty Comments: I have been unable to do much research in the past few years because:

- Unable to find time for personal projects
 - Teaching and service take up a lot of time, but research/practice is critical
 - Need more guidance
- no capacity and infrastructure at univ. to support projects
 - university not set up to support research - yet it is required
 - EQUIPMENT AND SUPPLY CONCERNS
- For many engineers and scientists, a dedicated personal lab space is essential to research, but very few of us have those.
 - This prevents continuity of research, and makes it hard to do any experimental work.
- Coming to academia from a career as an active practitioner-- this process is entirely new to me

Challenges

- Discipline specific concerns
 - Childcare (CSHLA)
 - Lack of lab space (DEC/Manayunk)
 - Lack of equipment(CSHLA)
 - Not required (CSHLA)
 - Statistical support
 - Teaching load (DEC)



Faculty Suggestions

- need a grant office to help write, follow up applications and seek available grants
- have to reduce overhead from 59% to a reasonable rate, comparable to other schools
- a reduced teaching load to faculties, who are active researchers
- one reduced teaching load for publishing one peer-reviewed journal paper is reasonable
- For many engineers and scientists, a dedicated personal lab space is essential to research
- The University, especially the School of Textiles and Materials Technology had research funding to the tune of a million dollars per year until a few years ago.
- We should find out why the research funding suddenly dropped.
- It requires concerted effort to develop and maintain good contacts with funding agencies to obtain research grants.

Future Plans

Thank You!