

# Tobacco-Free Campus



**PHILADELPHIA**  
**UNIVERSITY**

---

ALI EL-KERDI, PHD, DPT, PT, ATC, LAC, CAT(C), CSCS  
PROGRAM DIRECTOR  
MASTER OF SCIENCE IN ATHLETIC TRAINING

# Background

---

1. 20 million Americans dead since 1965
  - 2.5 million were nonsmokers killed by secondhand smoke exposure
2. > 480,000 deaths/year caused by cigarette use & exposure to secondhand smoke
  - 1200 deaths/day
  - 2400 young people become regular smokers
3. \$289 billion annually direct cost
  - \$133 billion for direct medical care
  - \$156 billion in lost productivity
  - \$5.6 billion in lost productivity from exposure to secondhand smoke

From: *The Health Consequences of Smoking – 50 Years of Progress: A Report of the Surgeon General* (2014)

# Background

---

4. Young adults and children exposed to secondhand smoke are likely to get sick more often
  - Bronchitis, pneumonia, asthma etc.
5. >16 million Americans have an associated disease caused by smoking
  - Lung cancer, coronary heart disease, stroke, and respiratory problems
  - 1/3 cancer deaths is caused by smoking
6. Tobacco use is the leading cause of preventable death in the US
  - Kills more Americans than alcohol, car crashes, AIDS-related causes, fires, heroin, cocaine, homicide and suicide **combined!!!!**

From: *The Health Consequences of Smoking – 50 Years of Progress: A Report of the Surgeon General* (2014)

# Converting to a Tobacco-Free Campus

- ❖ **1,483** 100% smoke-free campuses.
- **1,137** are 100% tobacco-free
- **823** prohibit the use of e-cigarettes anywhere on campus



American Nonsmokers' Rights Foundation

Pennsylvania	Baptist Bible College +
Pennsylvania	Community College of Beaver County (3 campuses) <sup>e</sup> +
Pennsylvania	Delaware County Community College (8 campuses) +
Pennsylvania	Eastern University (4 campuses) +
Pennsylvania	Harrisburg Area Community College (5 campuses) <sup>e</sup> +
Pennsylvania	Lackawanna College +
Pennsylvania	Lehigh Carbon Community College
Pennsylvania	Marywood University +
Pennsylvania	Montgomery County Community College (2 campuses) <sup>e</sup> +
Pennsylvania	Philadelphia College of Osteopathic Medicine, City Line Campus <sup>e</sup> +
Pennsylvania	Reading Area Community College <sup>e</sup> +
Pennsylvania	Salus University (4 campuses) <sup>e</sup>
Pennsylvania	University of the Sciences <sup>e</sup> +
Pennsylvania	Widener University (3 campuses) <sup>e</sup> +

+ = 100% tobacco-free campus (no forms of tobacco allowed). All other policies listed are smokefree only (non-combustible forms of tobacco are allowed).

<sup>e</sup> = No use of E-cigarettes allowed anywhere on campus.

American Nonsmokers' Rights Foundation



# More data...

---

- ❖ 1/3 students exposed to **second hand smoke**
- ❖ 1/5 students experience health impact from **second hand exposure**
- ❖ 2/3 students would prefer smoke-free campus
- ❖ 3/4 students (mostly smokers) are “ok” with a smoke-free campus
- ❖ Most students prefer a smoke-free college
- ❖ 69% of employees would choose a smoke-free college over one that isn't

From: A partnership among the Oregon Council of Student Services Administrators, the Oregon Department of Community Colleges and Workforce Development, and the American Lung Association of Oregon commissioned the student survey (2007)

# Advantages

---

- ❖ Reduction in risk of fires
- ❖ Decreased liability insurance cost
- ❖ Decreased medical insurance costs
- ❖ Eliminate the risk of ADA accessibility challenges related to tobacco smoke
- ❖ Avoid legal liability from student, employee and visitor exposure Decrease costs for grounds and building maintenance
- ❖ 77% fewer cigarette butts on college campuses with 100% smoke-free campus-wide policies – lower cleaning/maintenance cost

# Implementation



**COLLEGE  
TOBACCOFREECAMPUS.org  
INITIATIVE**



**smokefree.gov**



## Tobacco-Free Campus

Lessons learned from one university's initiative to kick the habit



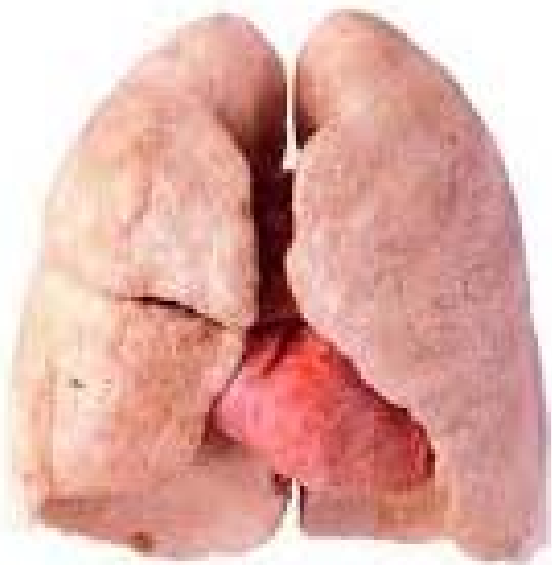




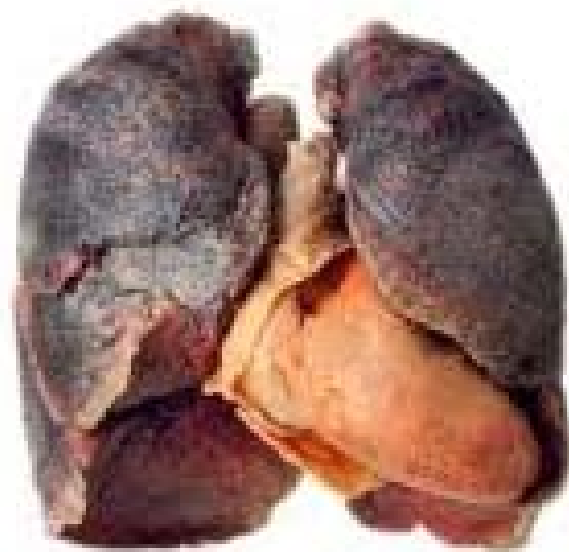
**PHILADELPHIA**  
UNIVERSITY



**Jefferson**



Healthy Lung



Smoker's Lung

