



STUDENT LIFE EAST FALLS

Henry J. Humphreys, Dean of Students

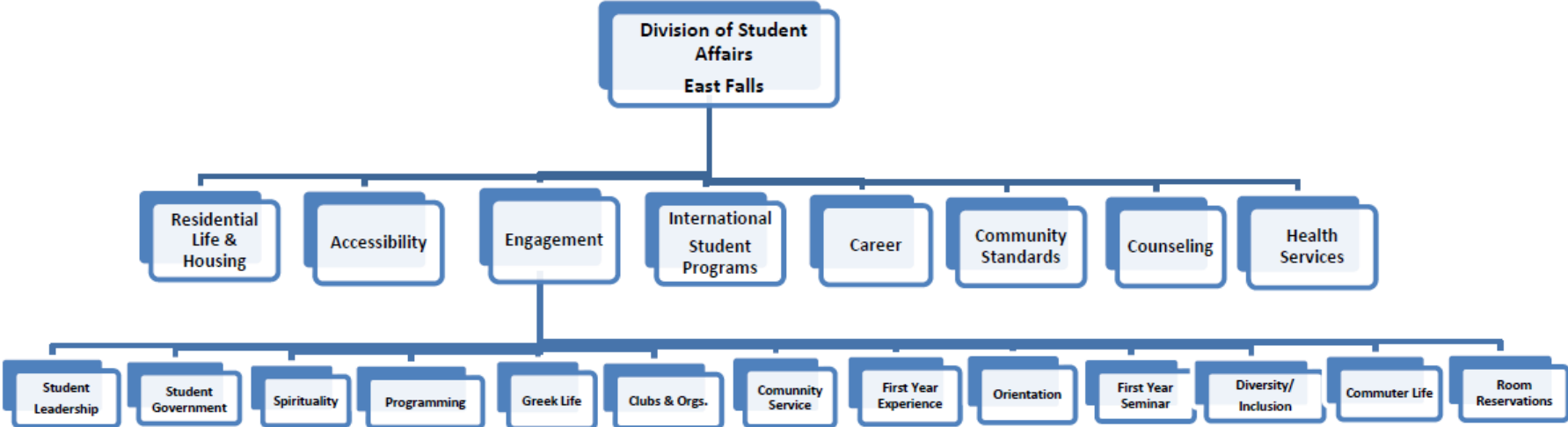
Timothy J. Butler, Associate Dean

DIVISION OF STUDENT LIFE SCOPE

Student Life has oversight of co-curricular supports, programs and services for all Undergraduate, Graduate & CPS students. The professional staff are dedicated to reducing barriers & enhancing a students collegiate experience.



DIVISIONAL STRUCTURE



THE OFFICE OF STUDENT ACCESSIBILITY SERVICES

The Office is responsible for promoting access to facilities and programs, ensuring equal educational opportunities, acting as an informational and referral source, and serving as a liaison between faculty and student;



Collaborate and support Faculty and Staff to ensure:

- Student success;
- Compliance with disability law;



MARIANNE ABLE CAREER SERVICES CENTER

Career Advising for All Student Populations/ Alumni;

Employer Relations- Job/Internship Postings:



Presentations for Faculty on Career Related Topics;

Career Fairs/Design Expo/On Campus Interview Program;

First Destination Survey: 95% for 2016

COUNSELING SERVICES

Support undergraduate and graduate students with individual short term counseling (*average 6 visits*);

Emergency support throughout the day and daily drop-in hour 1:00pm-2:00pm;

Workshop: Monthly Mindfulness, Weekly Grief Group, Hurricane Support Group & Online Mental Health Screenings;

Consultation, outreach, collaboration and prevention with the faculty, students and staff;



HEALTH SERVICES

Keeping them in class at their highest learning potential;

Appointments available for wellness / sickness / illness;

Walk-In for emergencies;



INTERNATIONAL AND EXCHANGE STUDENT PROGRAMS

Supports international students (undergraduate & graduate) on an F-1 student visa and other non-immigrant visas;

Currently 375 bachelor's, master's and doctoral students;

Oversee SEVIS (Student and Exchange Visitor Informational System) compliance including work permissions: CPT, curricular practical training (Internships); OPT optional practical training;

Assist international students integration into the community through educational & social programming;



OFFICE OF RESIDENCE LIFE

Oversee the educational, social and housing operations for all the University residential Community Residential Student Care and Concerns;

Provides leadership opportunities for upperclassmen through the Resident Coordinator and Resident Assistant program;

Community Standards;



OFFICE OF STUDENT ENGAGEMENT

New Student Programs

- New Student Orientation;
- Welcome Week;
- First Year Experience;
- First Year Seminar (FYS-100);

Diversity and Social Justice

- Social Justice Programming;
- Community Service;
- Service Learning (SERV 101);
- Spiritual Development;

Operations

- Kanbar Campus Center;
- Ravenhub;
- Off-Campus Housing;
- Campus Reservations;
- Photo ID;

Campus Activities

- Clubs and Organizations;
- Greek Life;
- Leadership Development;
- Commuter Life;
- Campus Traditions;



DEAN OF STUDENTS OFFICE

"It's All About The Students"



Student Life

- Assist students in lowering the barriers to achieving their educational goals;
- Provide the support and challenges necessary to their developmental growth opportunities and to develop into future leaders in their field of study and the greater society;

Student Success

- Student-oriented culture that ensures access, education excellence, fosters student development, and supports high levels of student engagement and success across all elements of the University ;
- Sustain and advance a collaborative and student focused culture in partnership with faculty, administration and staff across all offices for the University's;



Shameless Plug ☺



Any Faculty interested in serving as a member of the University Community Standards Board can contact Christina Moran (moranc@philau.edu)

Feel free to stop by any of the Student Life Offices to enjoy the Halloween decorations!



Jefferson

**Philadelphia University +
Thomas Jefferson University**

HOME OF SIDNEY KIMMEL MEDICAL COLLEGE