

BACKGROUND INFORMATION to SHARED GOVERNANCE at Philadelphia University

Prepared by the ad-hoc Shared Governance Committee:

Rob Fleming, Valerie Hanson, Nancy Howard, Gwynne Keathley (co-chair), Barbara Kimmelman (co-chair), Chris Pastore, Claudia Phillips, Randy Swearer, Rachel Wilson

January 2012

TABLE OF CONTENTS

1. Roles of Governing Board, Administration, and Faculty in Shared Governance _____ 2
2. Diagram of Shared Governance Structure with Roles _____ 4
3. Monthly Schedule of Committee Meetings _____ 5
4. Tally of Faculty Membership in the Shared Governance Structure _____ 6

1. ROLES OF GOVERNING BOARD, ADMINISTRATION, AND FACULTY IN SHARED GOVERNANCE

Role of Governing Board

The following are the primary responsibilities of the Board of Trustees:

Ultimately, the board holds the institution it serves in trust for the public that supports and depends on an effective, diverse, and competitive system of higher education. This principle undergirds each of these 13 primary responsibilities:

- Has fiscal responsibility for the University.
- Sets the University mission and purposes.
- Appoints and supports the president, and monitors the president's performance.
- Assesses board performance.
- Insists on strategic planning.
- Reviews educational and public service programs.
- Ensures adequate resources and good management of the institution.
- Reviews any decisions or changes that may affect the future of the University.
- Preserves institutional independence.
- Relates campus to community and community to campus.
- Serves occasionally as a court of appeal.

The Board of Trustees has legal authority over the University. It delegates this authority to the president, which is further delegated to members of the administration.

Role of Administration

The Administration is responsible for managing the University in accordance with directives issued by the President, which reflect the priorities, by-laws, and specific directives of the Board of Trustees.

The University Administration is responsible for the functions that allow the University to advance its mission, such as:

- University and external communications and public affairs
- Admissions and enrollment management
- Information technology
- Maintenance, safety and security
- Fundraising
- Student Affairs
- Human Resources management

In addition, the University Administration:

- Supports academic units
- Guides faculty affairs
- Leads individual academic units and clusters of academic fields
- Advances the initiatives in the strategic plan
- Develops and implements policies advancing the academic units in collaboration with faculty
- Collaborates with faculty on curriculum creation and revision

Shared governance requires that the administration further delegates to the faculty significant authority over academic matters. Shared governance requires the administration to consult with the faculty on issues that clearly and directly affect them.

Roles of Faculty

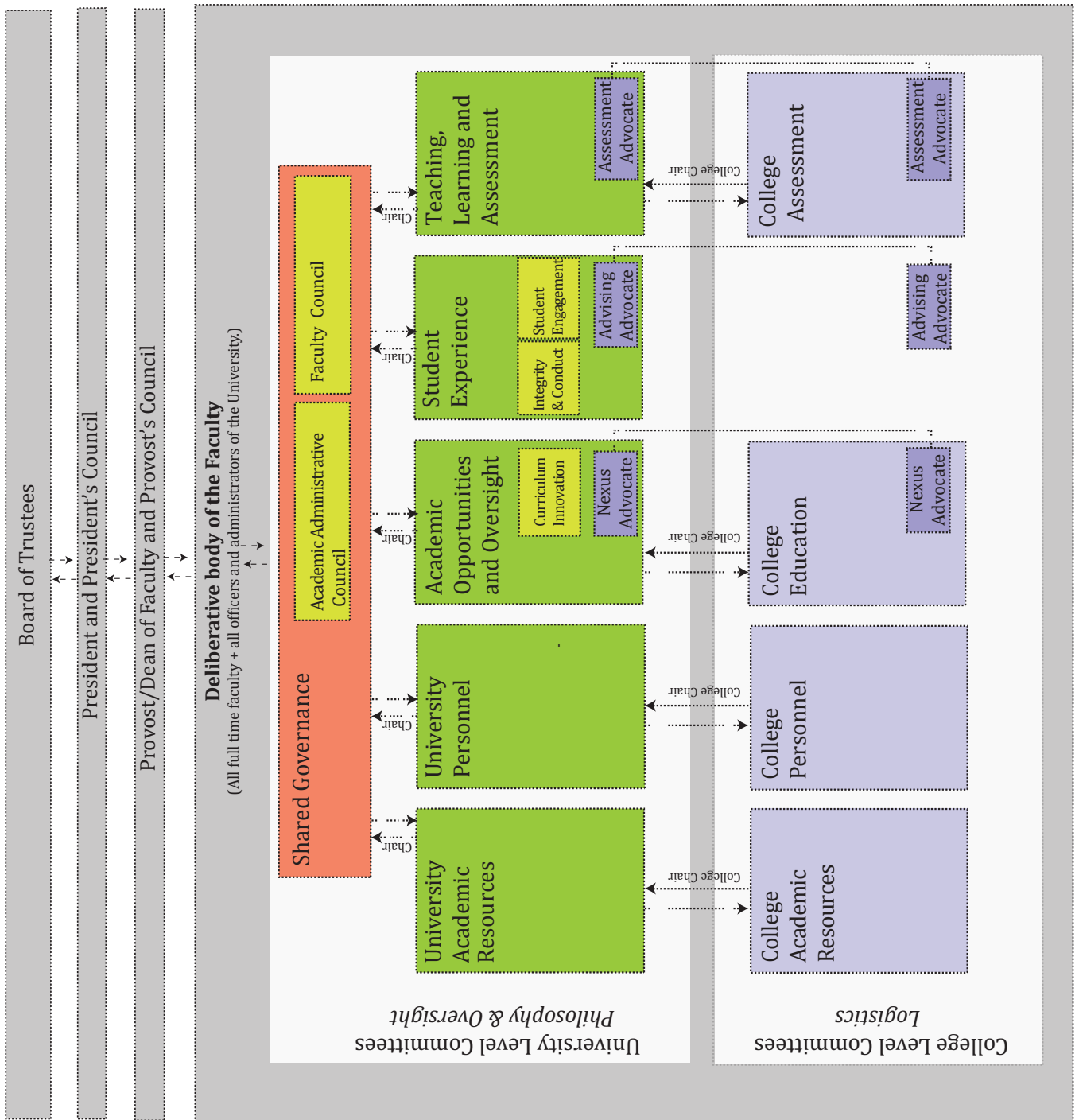
Faculty have primary responsibility in the following areas:

- Curriculum
- Subject matter
- Methods of instruction
- Research
- Faculty status
- Those aspects of student life that relate to the educational process.

The Faculty contribute to the:

- Revision of university learning outcomes
- Academic merit scholarship decisions, when appropriate
- Revision to the university mission and strategic plan
- Process for reaccreditation
- Health and success of the institution

2. DIAGRAM OF SHARED GOVERNANCE STRUCTURE WITH ROLES



3. MONTHLY SCHEDULE OF COMMITTEE MEETINGS

University-wide Committees

1st Tuesday - 12:30-1:30	Shared Governance - additional meeting time scheduled as needed	1st Thursday - 12:30-1:30	Teaching & Learning Assessment	University Personnel - scheduled as needed	Faculty Council - scheduled as needed
1st Tuesday - 1:30-2:30		1st Thursday - 1:30-2:30			
2nd Tuesday - 12:30-1:30		2nd Thursday - 12:30-1:30	Academic Opportunities & Oversight	University Academic Resources - scheduled as needed	Student Experience - scheduled as needed
2nd Tuesday - 1:30-2:30		2nd Thursday - 1:30-2:30			
3rd Tuesday - 12:30-1:30	University Faculty Meeting	3rd Thursday - 12:30-1:30	Teaching & Learning Assessment - scheduled as needed	University Personnel	Faculty Council
3rd Tuesday - 1:30-2:30		3rd Thursday - 1:30-2:30			
4th Tuesday - 12:30-1:30	Shared Governance	4th Thursday - 12:30-1:30	Academic Opportunities & Oversight - scheduled as needed	University Academic Resources	Student Experience
4th Tuesday - 1:30-2:30		4th Thursday - 1:30-2:30			
	Shared Governance - additional meeting time scheduled as needed				

College-wide Committees

1st Tuesday - 12:30-1:30	Program/Division Mtg	1st Thursday - 12:30-1:30	College Education	College Academic Resources - scheduled as needed	Program/Division Mtg
1st Tuesday - 1:30-2:30		1st Thursday - 1:30-2:30			
2nd Tuesday - 12:30-1:30	College/School Faculty Meetings	2nd Thursday - 12:30-1:30	College Assessment - scheduled as needed	College Personnel	Program/Division Mtg
2nd Tuesday - 1:30-2:30		2nd Thursday - 1:30-2:30			
3rd Tuesday - 12:30-1:30		3rd Thursday - 12:30-1:30	College Education - scheduled as needed	College Academic Resources	Program/Division Mtg
3rd Tuesday - 1:30-2:30		3rd Thursday - 1:30-2:30			
4th Tuesday - 12:30-1:30	Program/Division Mtg	4th Thursday - 12:30-1:30	College Assessment	College Personnel - scheduled as needed	Program/Division Mtg
4th Tuesday - 1:30-2:30		4th Thursday - 1:30-2:30			

4. TALLY OF FACULTY MEMBERSHIP IN THE SHARED GOVERNANCE STRUCTURE

Note: Numbers in this table expressed as E+C = Elected + College/University Chair

UNIVERSITY STANDING COMMITTEES

	Total # Voting Faculty	# Senior Faculty	ABE	DEC	SHLA
Shared Governance	5+5*	1	1+0	1+0	1+0
Personnel	6+3	9	2+1	2+1	2+1
Academic Opportunities & Oversight	4+3	1	0+1	0+1	0+1
Academic Resources	7+0	1	1+0	1+0	1+0
Assessment, Teaching & Learning	3+3	1	0+1	0+1	0+1
Student Experience	6+0	1	1+0	1+0	1+0

*These 5 are the chairs of the University standing committees.

- There are a total of 45 University standing committee faculty positions. This number does not include the faculty advocates, non-voting faculty positions.
- 14 of these must be filled by “senior” faculty. The remainder of these spots may be filled by junior or senior faculty.
- This table does not include faculty advocates who are appointed to certain committees due to their role as advocates.

COLLEGE STANDING COMMITTEES

	C-ABE	C-DEC	C-SHLA
Personnel	4	6	6
Education	4	6	6
Academic Resources	3	3	3
Assessment, Teaching, Learning	3	3	3

- Each college has 14 or 18 faculty seats on college standing committees.
- In each college, 4 or 6 of these faculty seats (Personnel) need to be “senior” faculty. The remainder may be filled by junior or senior faculty.
- There are a total of 50 college standing committee faculty positions.

SUMMARY

University-wide:

50	College Standing Committees
45	University Standing Committees
95	Total (30 of these are Senior Faculty only)

College-wide:

Each college needs to fill the following number of seats on university and college standing committees.

C-ABE:

14 College Standing Committees

5 University Standing Committees

19* Total (4 of these are Senior Faculty only)

**Note: C-ABE has 23 FT faculty*

C-DEC & C-SHLA:

18 College Standing Committees

5 University Standing Committees

23 Total (6 of these are Senior Faculty only)